

MESKER MBM, LLC

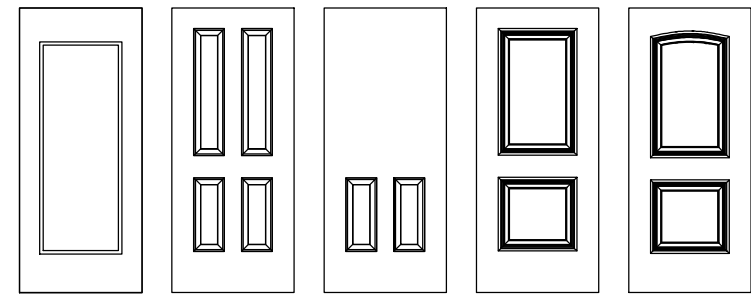
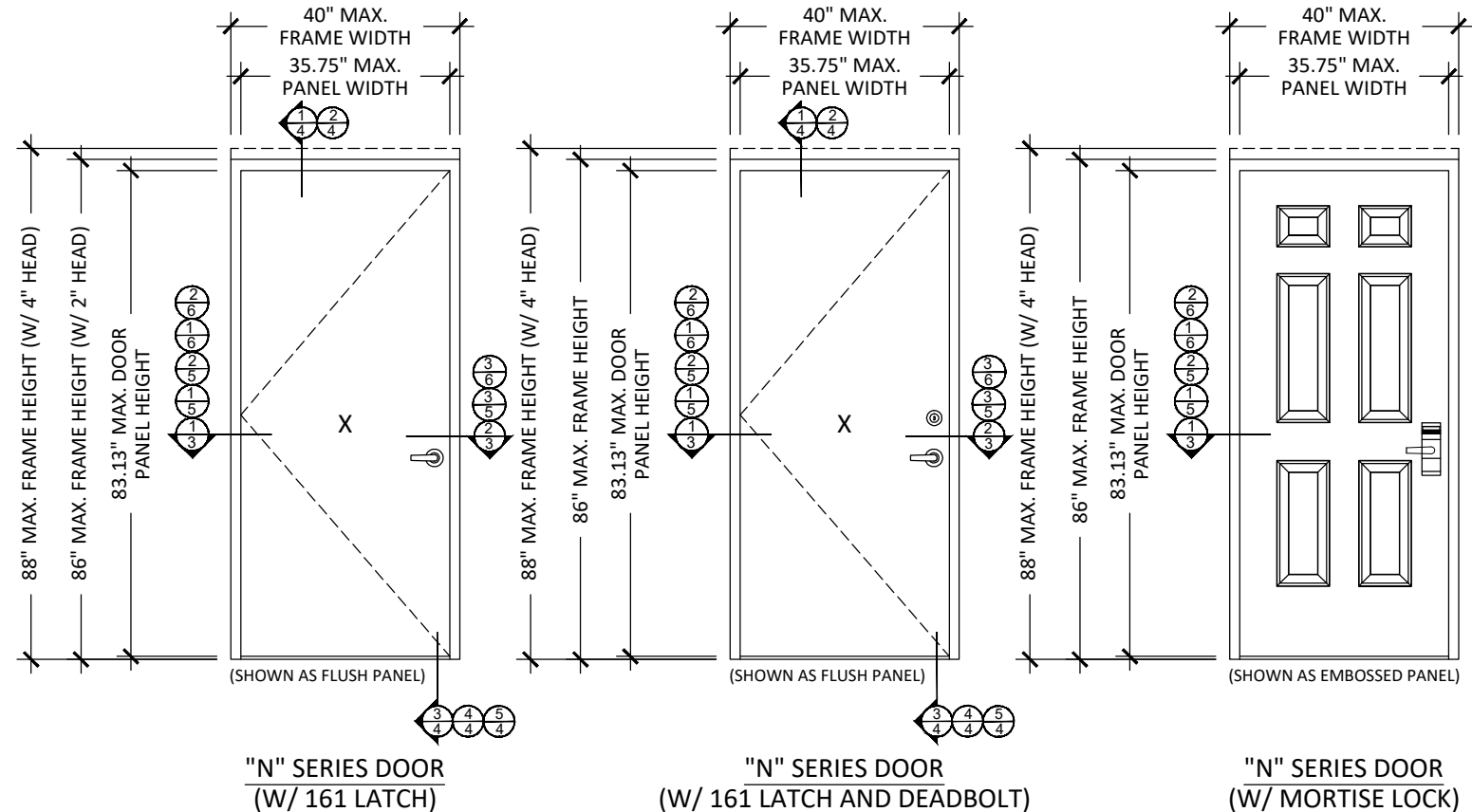
"N" SERIES COMMERCIAL SINGLE OPAQUE DOOR INSWING (WZ3) (IMPACT)



MESKER MBM, LLC
3340 STANDWOOD BLVD.
HUNTSVILLE, AL 35811
PH: (256) 851-6670

GENERAL NOTES

- THIS PRODUCT HAS BEEN EVALUATED AND IS IN COMPLIANCE WITH THE CURRENT FLORIDA BUILDING CODE (FBC) ASTM E330-14, ASTM E1886-13a, ASTM E1996-17, TAS 201-94, TAS 202-94, TAS 203-94 STRUCTURAL REQUIREMENTS EXCLUDING THE "HIGH VELOCITY HURRICANE ZONE".
- PRODUCT ANCHORS SHALL BE AS LISTED AND SPACED AS SHOWN ON DETAILS. ANCHOR EMBEDMENT TO BASE MATERIAL SHALL BE BEYOND WALL DRESSING OR STUCCO.
- WHEN USED IN THE AREA REQUIRING WIND BORNE DEBRIS PROTECTION THIS PRODUCT COMPLIES WITH SECTION 1609 OF FBC AND DOES NOT REQUIRE AN IMPACT RESISTANT IN WIND ZONE 3 OR LESS. THIS PRODUCT MEETS MISSILE LEVEL "D" AS DEFINED IN ASTM E1996. THIS PRODUCT DOES REQUIRE AN IMPACT RESISTANT IN WIND ZONE 4.
- SITE CONDITIONS THAT DEVIATE FROM THE DETAILS OF THIS DRAWING REQUIRE FURTHER ENGINEERING ANALYSIS BY A LICENSED ENGINEER OR REGISTERED ARCHITECT.
- INSWING CONFIGURATIONS DO NOT MEET THE WATER INFILTRATION REQUIREMENTS FOR THE "HVHZ". INSWING UNITS SHALL BE INSTALLED ONLY IN NON-HABITABLE AREAS OR AT HABITABLE LOCATIONS PROTECTED BY AN OVERHANG OR CANOPY SUCH THAT THE ANGLE BETWEEN THE EDGE OF CANOPY OR OVERHANG TO SILL IS LESS THAN 45 DEGREES.



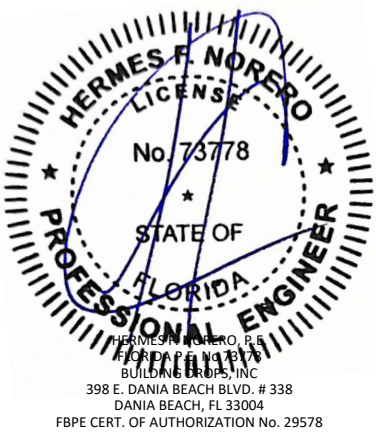
OVERALL FRAME SIZE		LOCK TYPE	DESIGN PRESSURE (PSF)	
WIDTH	HEIGHT		POSITIVE	NEGATIVE
40" X 86" (W/ 2" HEAD)		161 LATCH (SCHLAGE)	+55.0	-55.0
		161 LATCH & DEADBOLT (DESIGN HARDWARE)	+70.0	-75.0
40" X 88" (W/ 4" HEAD)		86E MORT/SE LOCK (ONITY)	+60.0	-75.0

TABLE OF CONTENTS	
SHEET	SHEET DESCRIPTION
1	TYPICAL ELEVATION, DESIGN PRESSURE & GENERAL NOTES
2	DOOR PANEL DETAILS 161 LOCK PERP
3	DOOR PANEL DETAILS 86E LOCK PERP
4	HORIZONTAL CROSS SECTION
5	HORIZONTAL CROSS SECTION
6	HORIZONTAL CROSS SECTION
7	VERTICAL CROSS SECTION
8	FRAME ANCHORING
9	ANCHORING DETAILS
10	COMPONENTS
11	BILL OF MATERIALS & COMPONENTS

TITLE: "N" SERIES COMMERCIAL SINGLE OPAQUE DOOR - INSWING (WZ3) (IMPACT)
TYPICAL ELEVATION, DESIGN PRESSURE & GENERAL NOTES
PREPARED BY: BUILDING DROPS, INC.
398 E. DANIA BEACH BLVD., STE. 338
DANIA BEACH, FL 33004
PH: (954)399-8478
FAX: (954)744-4738
WEB: www.buildingdrops.com

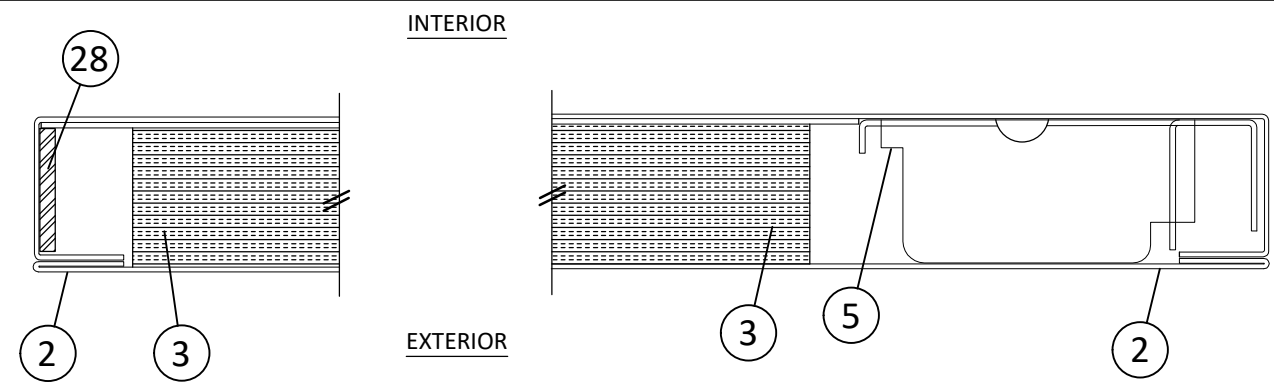
REMARKS	BY	DATE
2023 NAME CHANGE	MG	03/23

THE INSTALLATION DETAILS DESCRIBED HEREIN ARE GENERIC AND MAY NOT REFLECT ACTUAL CONDITIONS FOR A SPECIFIC SITE. IF SITE CONDITIONS CAUSE INSTALLATION TO DEVIATE FROM THE REQUIREMENTS DETAILED HEREIN, A LICENSED ENGINEER OR ARCHITECT SHALL PREPARE SITE SPECIFIC DOCUMENTS FOR USE WITH THIS DOCUMENT.

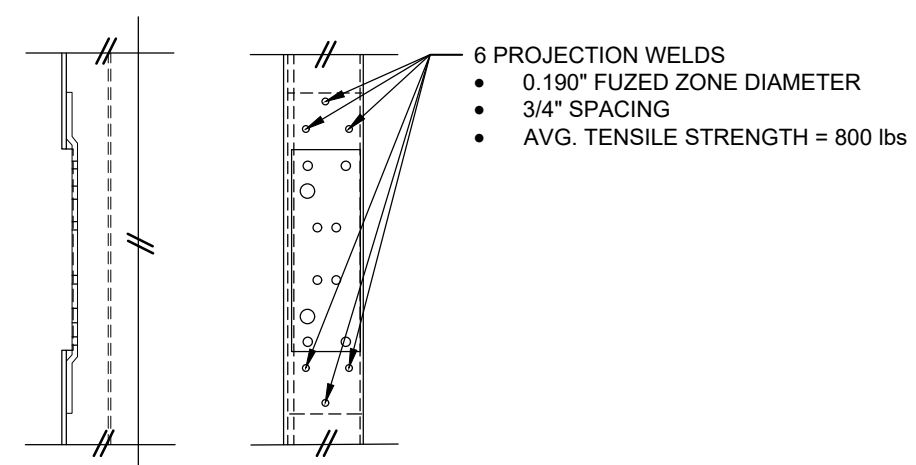


FL #: **FL11218**
DATE: **09.24.15**
DWG. BY: **JK** | CHK. BY: **FLS**
SCALE: **NTS**
DWG. #: **MDI016**
SECTION: **1** OF 11

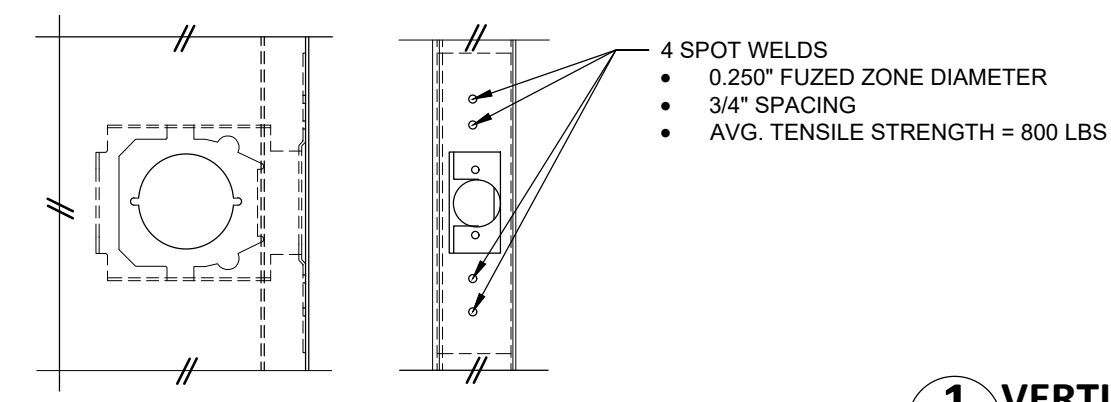
3/31/2023 8:57 AM
z:\projects\mesker.mbm, llc\bc-23-0112 - fbc submittal - commercial steel doors\revisions\dwg\fl11218\mdi016.dwg



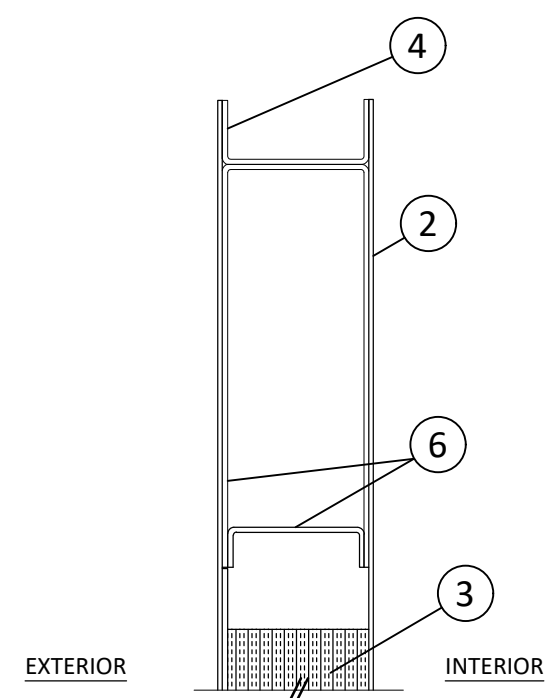
2 HORIZONTAL CROSS SECTION
2 DOOR PANEL



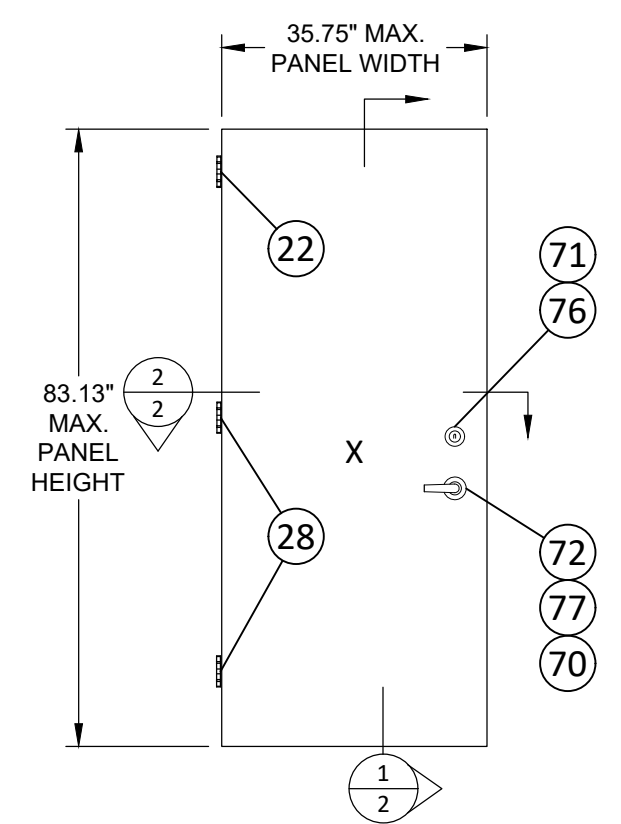
23 DOOR HINGE REINFORCEMENT



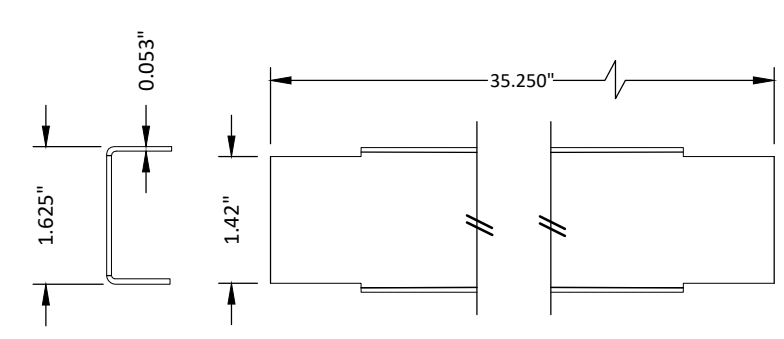
5 LOCK BOX REINFORCEMENT



1 VERTICAL CROSS SECTION
2 DOOR PANEL



1 "N" OPAQUE STEEL DOOR PANEL



4 DOOR TOP & BOTTOM CLOSER

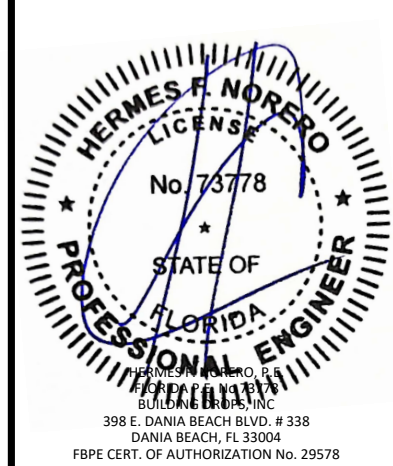


MESKER MBM, LLC
3340 STANDWOOD BLVD.
HUNTSVILLE, AL 35811
PH: (256) 851-6670

TITLE: "N" SERIES COMMERCIAL SINGLE OPAQUE DOOR - INSWING (WZ3) (IMPACT)
DOOR PANEL DETAILS
PREPARED BY: BUILDING DROPS, INC.
398 E. DANIA BEACH BLVD., STE. 338
DANIA BEACH, FL 33004
PH: (954)399-8478
FAX: (954)744-4738
WEB: www.buildingdrops.com

REMARKS	BY	DATE
2023 NAME CHANGE	MG	03/23

THE INSTALLATION DETAILS DESCRIBED HEREIN ARE GENERIC AND MAY NOT REFLECT ACTUAL CONDITIONS FOR A SPECIFIC SITE. IF SITE CONDITIONS CAUSE INSTALLATION TO DEVIATE FROM THE REQUIREMENTS DETAILED HEREIN, A LICENSED ENGINEER OR ARCHITECT SHALL PREPARE SITE SPECIFIC DOCUMENTS FOR USE WITH THIS DOCUMENT.



HERMES F. NORERO, P.E.
BUILDING DROPS, INC.
398 E. DANIA BEACH BLVD. # 338
DANIA BEACH, FL 33004
FBPE CERT. OF AUTHORIZATION No. 29578

FL #: **FL11218**

DATE: **09.24.15**

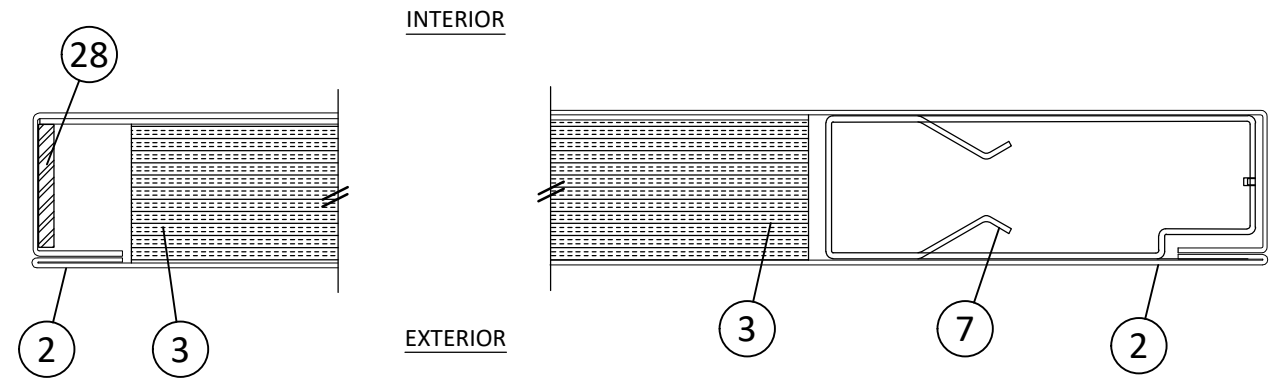
DWG. BY: **JK** CHK. BY: **FLS**

SCALE: **NTS**

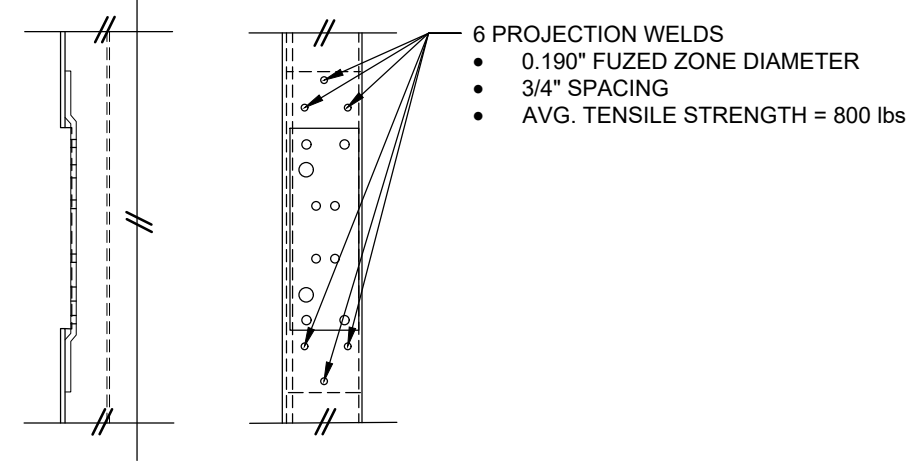
DWG. #: **MDI016**

SECTION: **2**
OF 11

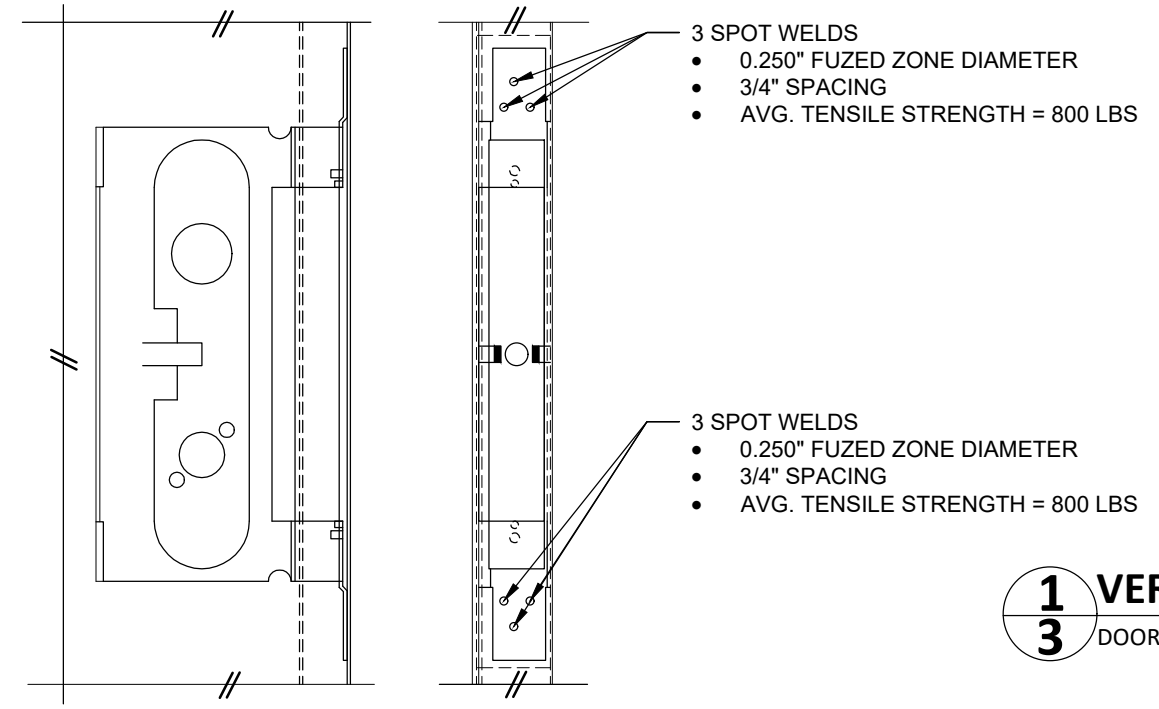
3/31/2023 8:57 AM
z:\projects\mesker.mbm, llc\bc-23-0112 - fbc submittal - commercial steel doors revisions\dwg\111218\mdi016.dwg



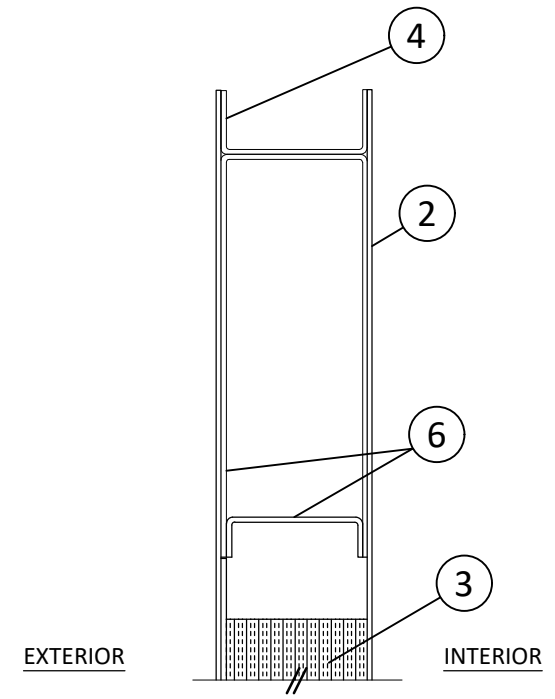
2 HORIZONTAL CROSS SECTION
3 DOOR PANEL



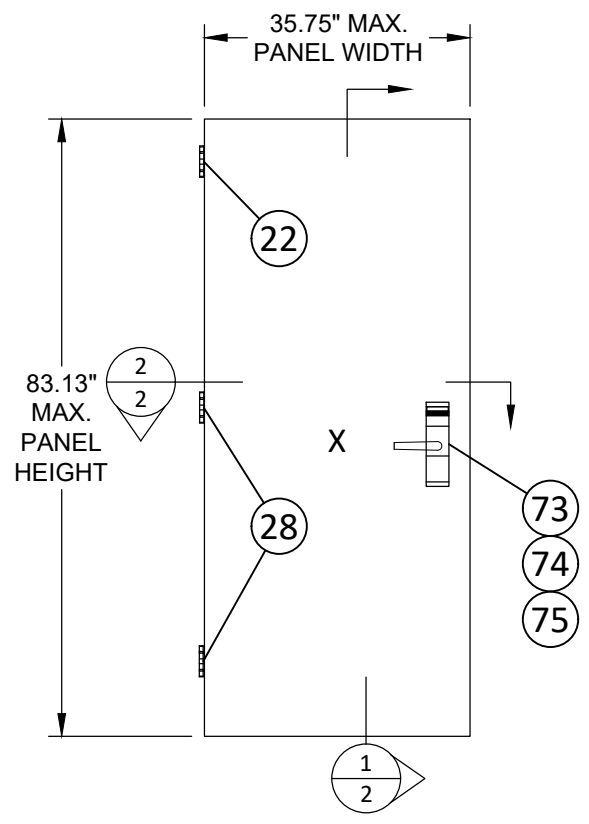
23 DOOR HINGE REINFORCEMENT



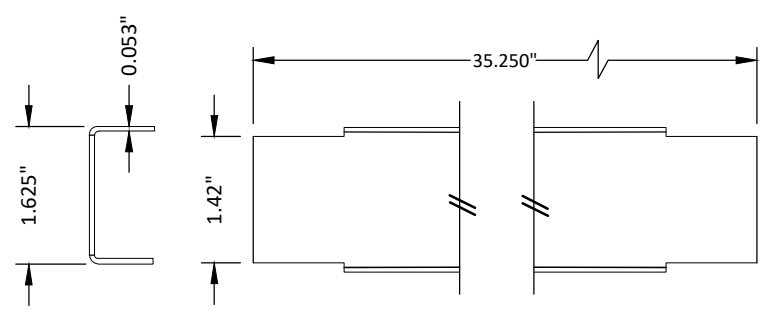
7 MORITISE BOX REINFORCEMENT



1 VERTICAL CROSS SECTION
3 DOOR PANEL



1 "N" OPAQUE STEEL DOOR PANEL



4 DOOR TOP & BOTTOM CLOSER

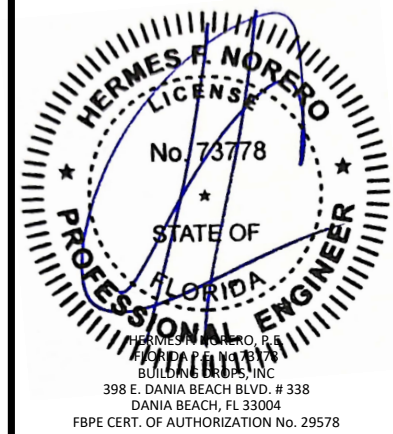


MESKER MBM, LLC
3340 STANDWOOD BLVD.
HUNTSVILLE, AL 35811
PH: (256) 851-6670

TITLE: "N" SERIES COMMERCIAL SINGLE OPAQUE DOOR - INSWING (WZ3) (IMPACT)
DOOR PANEL DETAILS
PREPARED BY: BUILDING DROPS, INC.
398 E. DANIA BEACH BLVD., STE. 338
DANIA BEACH, FL 33004
PH: (954)399-8478
FAX: (954)744-4738
WEB: www.buildingdrops.com

REMARKS	BY	DATE
2023 NAME CHANGE	MG	03/23

THE INSTALLATION DETAILS DESCRIBED HEREIN ARE GENERIC AND MAY NOT REFLECT ACTUAL CONDITIONS FOR A SPECIFIC SITE. IF SITE CONDITIONS CAUSE INSTALLATION TO DEVIATE FROM THE REQUIREMENTS DETAILED HEREIN, A LICENSED ENGINEER OR ARCHITECT SHALL PREPARE SITE SPECIFIC DOCUMENTS FOR USE WITH THIS DOCUMENT.



FL #: **FL11218**

DATE: **09.24.15**

DWG. BY: **JK** CHK. BY: **FLS**

SCALE: **NTS**

DWG. #: **MDI016**

SECTION: **3**
OF 11

3/31/2023 8:57 AM
z:\projects\mesker.mbm, llc\bc-23-0112 - fbc submittal - commercial steel doors revisions\dwg\11218\mdi016.dwg



MESKER MBM, LLC
3340 STANDWOOD BLVD.
HUNTSVILLE, AL 35811
PH: (256) 851-6670

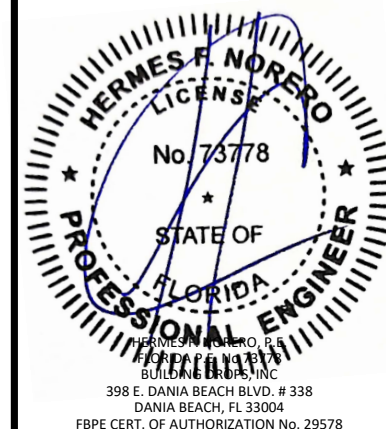
TITLE:
"N" SERIES COMMERCIAL SINGLE
OPAQUE DOOR - INSWING
(WZ3) (IMPACT)

HORIZONTAL CROSS SECTIONS

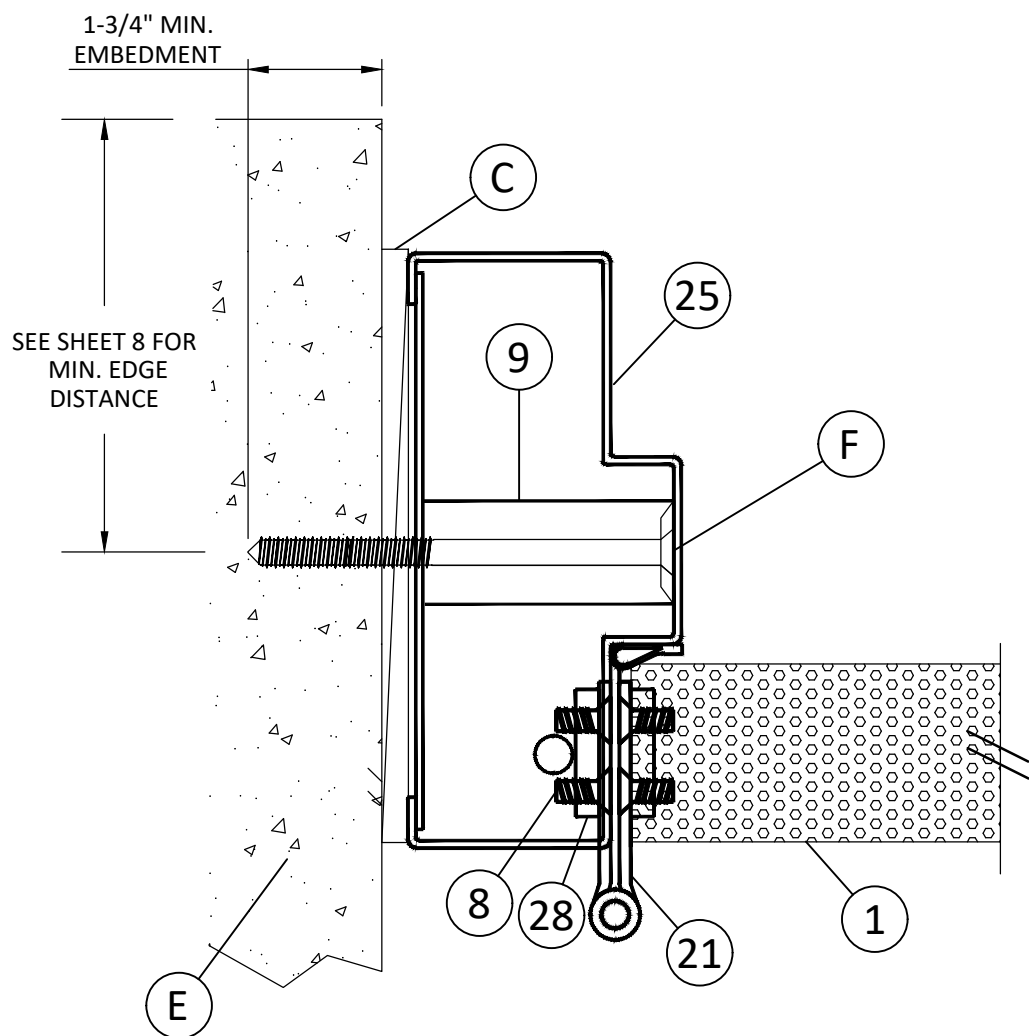
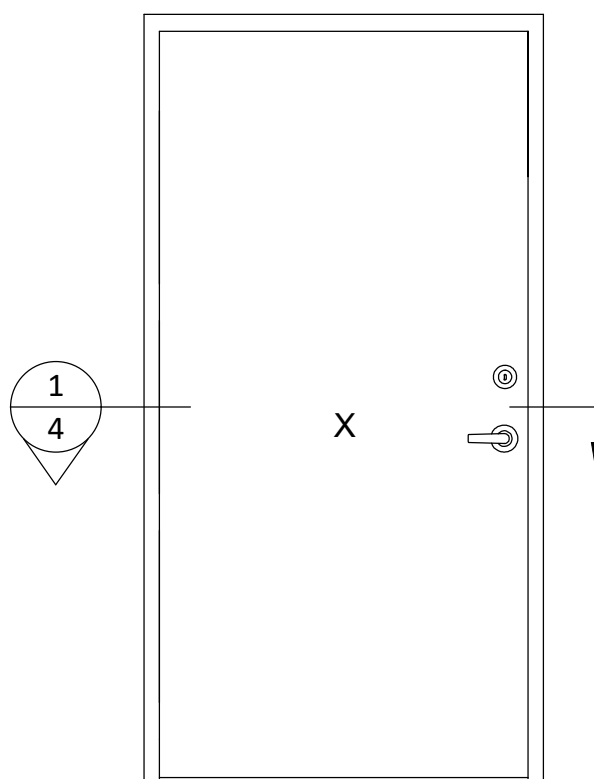
PREPARED BY:
BD
BUILDING DROPS
BUILDING DROPS, INC.
398 E. DANIA BEACH BLVD., STE. 338
DANIA BEACH, FL 33004
PH: (954) 399-8478
FAX: (954) 744-4738
WEB: www.buildingdrops.com

REMARKS	BY	DATE
2023 NAME CHANGE	MG	03/23

THE INSTALLATION DETAILS DESCRIBED HEREIN ARE GENERIC AND MAY NOT REFLECT ACTUAL CONDITIONS FOR A SPECIFIC SITE. IF SITE CONDITIONS CAUSE INSTALLATION TO DEVIATE FROM THE REQUIREMENTS DETAILED HEREIN, A LICENSED ENGINEER OR ARCHITECT SHALL PREPARE SITE SPECIFIC DOCUMENTS FOR USE WITH THIS DOCUMENT.

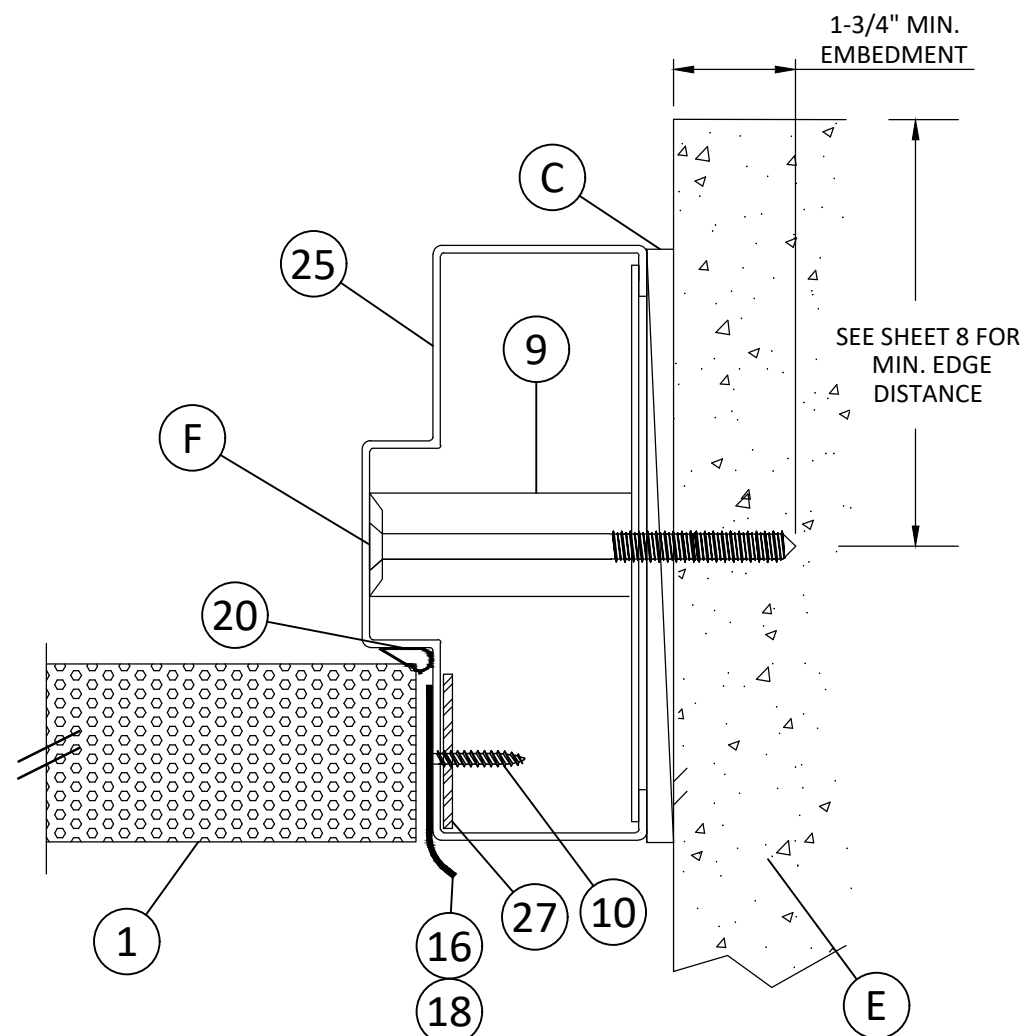


FL #:	FL11218
DATE:	09.24.15
DWG. BY:	JK
CHK. BY:	FLS
SCALE:	NTS
DWG. #:	MDI016
SECTION:	4



EXTERIOR

INTERIOR



1
4 HORIZONTAL CROSS SECTION

3/31/2023 8:58 AM



MESKER MBM, LLC
3340 STANDWOOD BLVD.
HUNTSVILLE, AL 35811
PH: (256) 851-6670

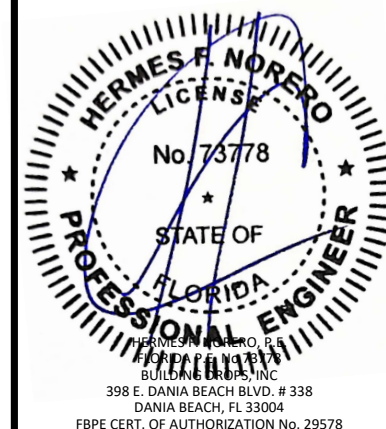
TITLE:
"N" SERIES COMMERCIAL SINGLE
OPAQUE DOOR - INSWING
(WZ3) (IMPACT)

HORIZONTAL CROSS SECTIONS

PREPARED BY:
BD
BUILDING DROPS
BUILDING DROPS, INC.
398 E. DANIA BEACH BLVD., STE. 338
DANIA BEACH, FL 33004
PH: (954)399-8478
FAX: (954)744-4738
WEB: www.buildingdrops.com

REMARKS	BY	DATE
2023 NAME CHANGE	MG	03/23

THE INSTALLATION DETAILS DESCRIBED HEREIN ARE GENERIC AND MAY NOT REFLECT ACTUAL CONDITIONS FOR A SPECIFIC SITE. IF SITE CONDITIONS CAUSE INSTALLATION TO DEVIATE FROM THE REQUIREMENTS DETAILED HEREIN, A LICENSED ENGINEER OR ARCHITECT SHALL PREPARE SITE SPECIFIC DOCUMENTS FOR USE WITH THIS DOCUMENT.



FL #: **FL11218**

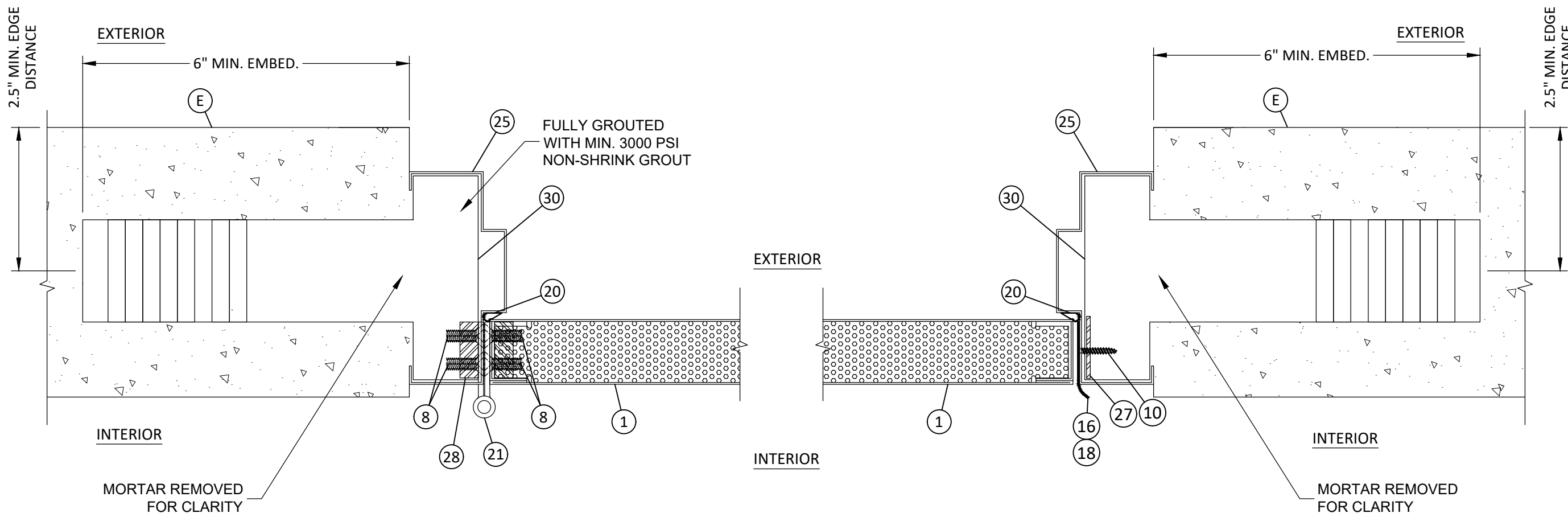
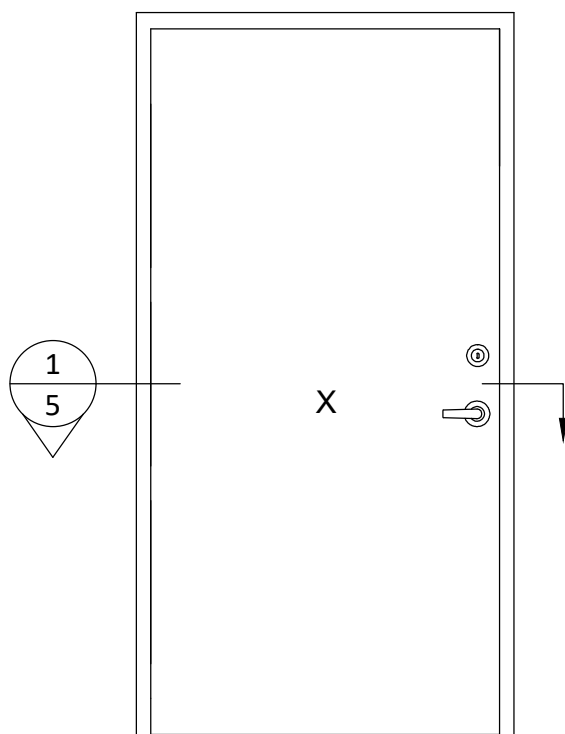
DATE: **09.24.15**

DWG. BY: **JK** CHK. BY: **FLS**

SCALE: **NTS**

DWG. #: **MDI016**

SECTION: **5**
OF 11



1
5 HORIZONTAL CROSS SECTION

z:\projects\mesker.mbm, llc\bc-23-0112 - fbc submittal - commercial steel doors revisions\dwg\fl11218\mdi016.dwg

3/31/2023 8:58 AM
z:\projects\mesker.mbm, llc\bc-23-0112 - fbc submittal - commercial steel doors revisions\dwg\111218\mdi016.dwg



MESKER MBM, LLC
3340 STANDWOOD BLVD.
HUNTSVILLE, AL 35811
PH: (256) 851-6670

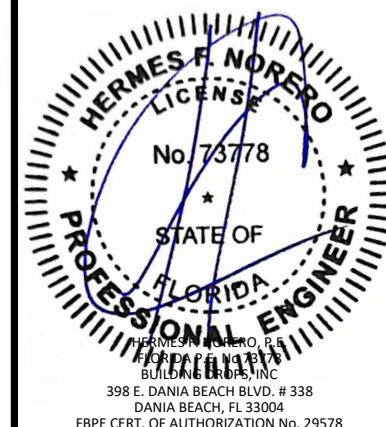
TITLE:
"N" SERIES COMMERCIAL SINGLE
OPAQUE DOOR - INSWING
(WZ3) (IMPACT)

HORIZONTAL CROSS SECTIONS

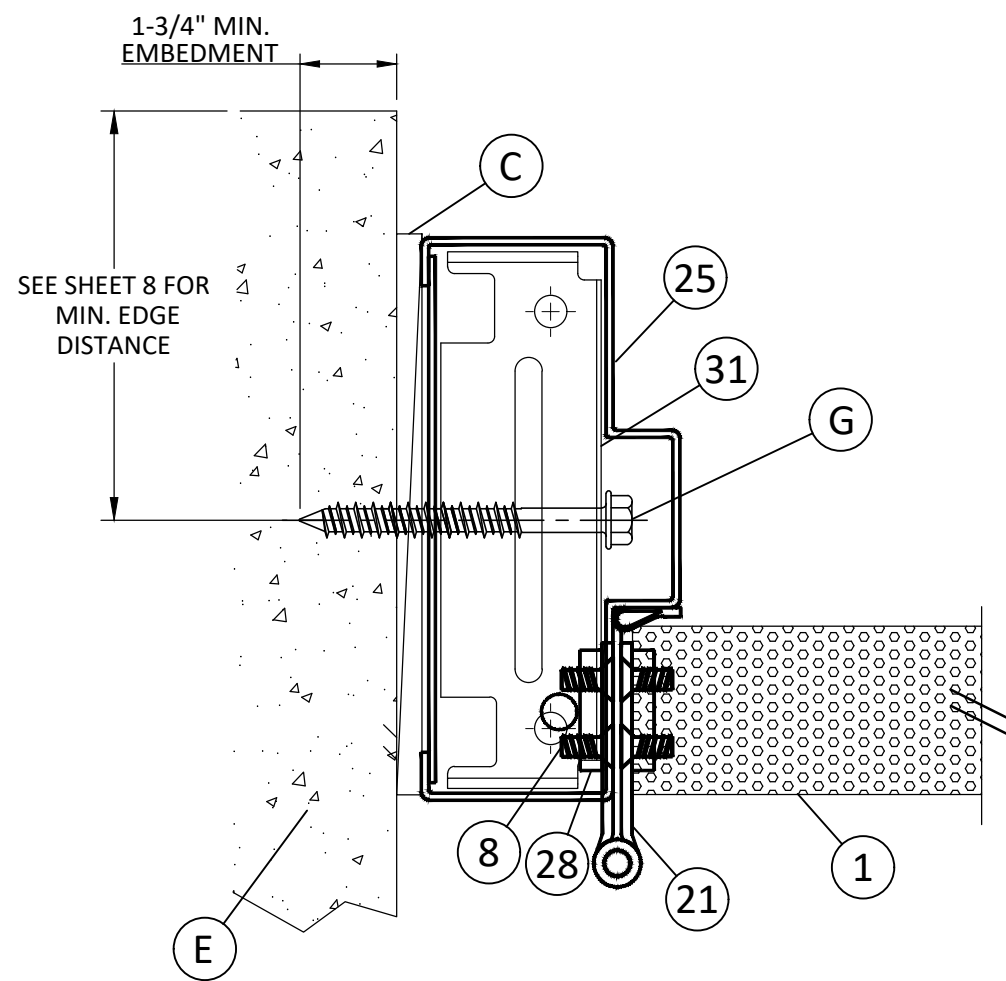
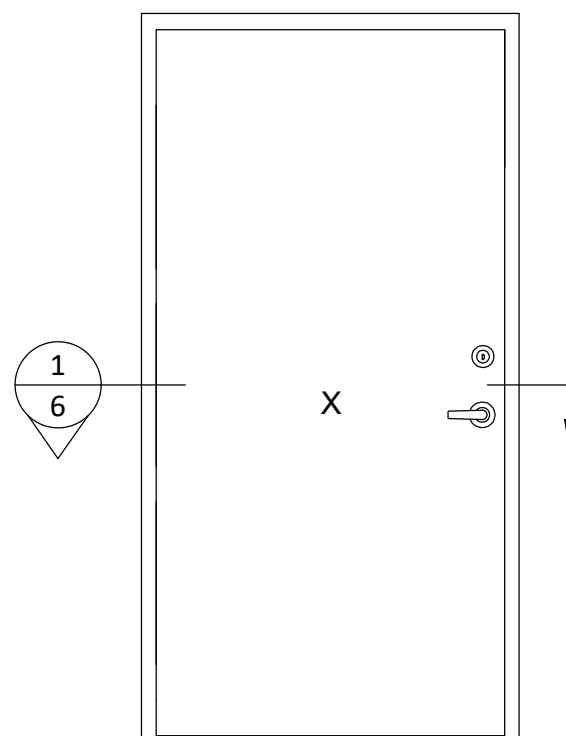
PREPARED BY:
BD
BUILDING DROPS
BUILDING DROPS, INC.
398 E. DANIA BEACH BLVD., STE. 338
DANIA BEACH, FL 33004
PH: (954)399-8478
FAX: (954)744-4738
WEB: www.buildingdrops.com

REMARKS	BY	DATE
2023 NAME CHANGE	MG	03/23

THE INSTALLATION DETAILS DESCRIBED HEREIN ARE GENERIC AND MAY NOT REFLECT ACTUAL CONDITIONS FOR A SPECIFIC SITE. IF SITE CONDITIONS CAUSE INSTALLATION TO DEVIATE FROM THE REQUIREMENTS DETAILED HEREIN, A LICENSED ENGINEER OR ARCHITECT SHALL PREPARE SITE SPECIFIC DOCUMENTS FOR USE WITH THIS DOCUMENT.

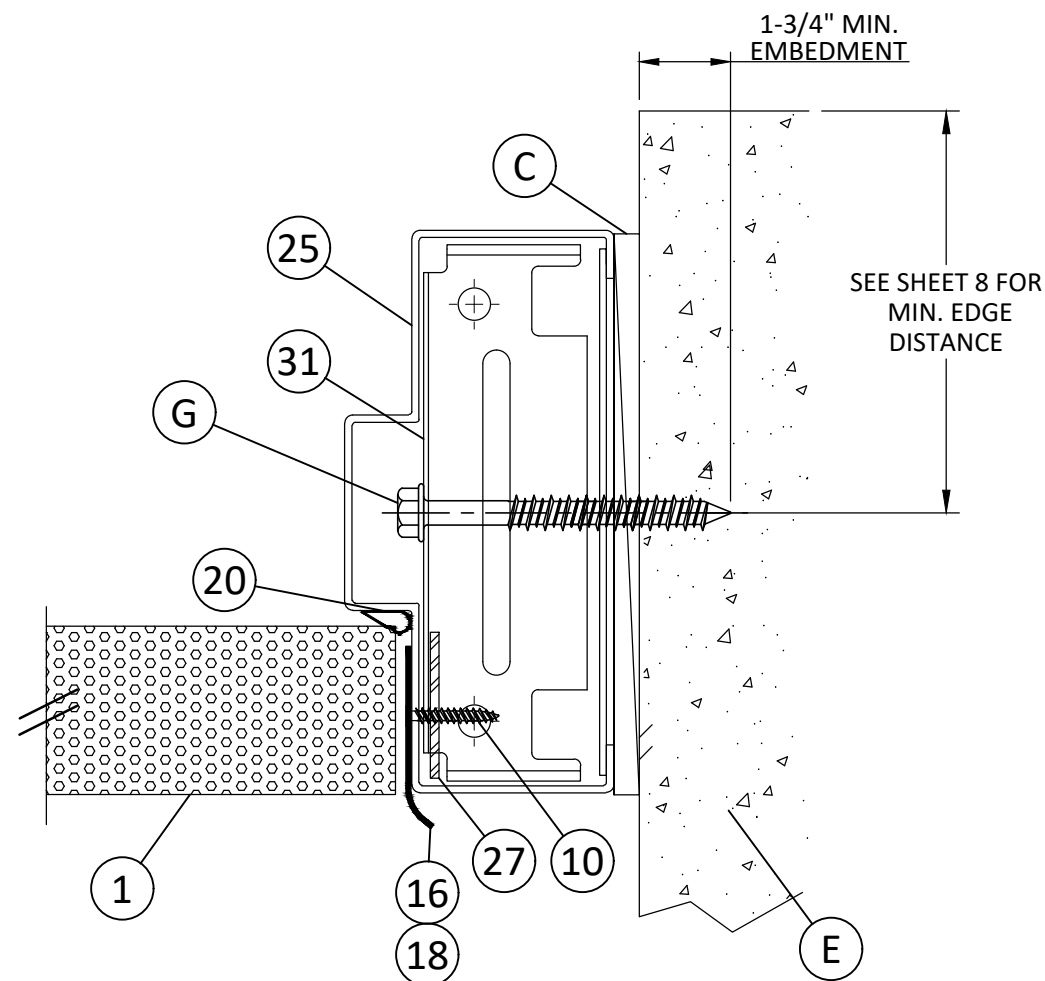


FL #:	FL11218
DATE:	09.24.15
DWG. BY:	JK
CHK. BY:	FLS
SCALE:	NTS
DWG. #:	MDI016
SECTION:	6



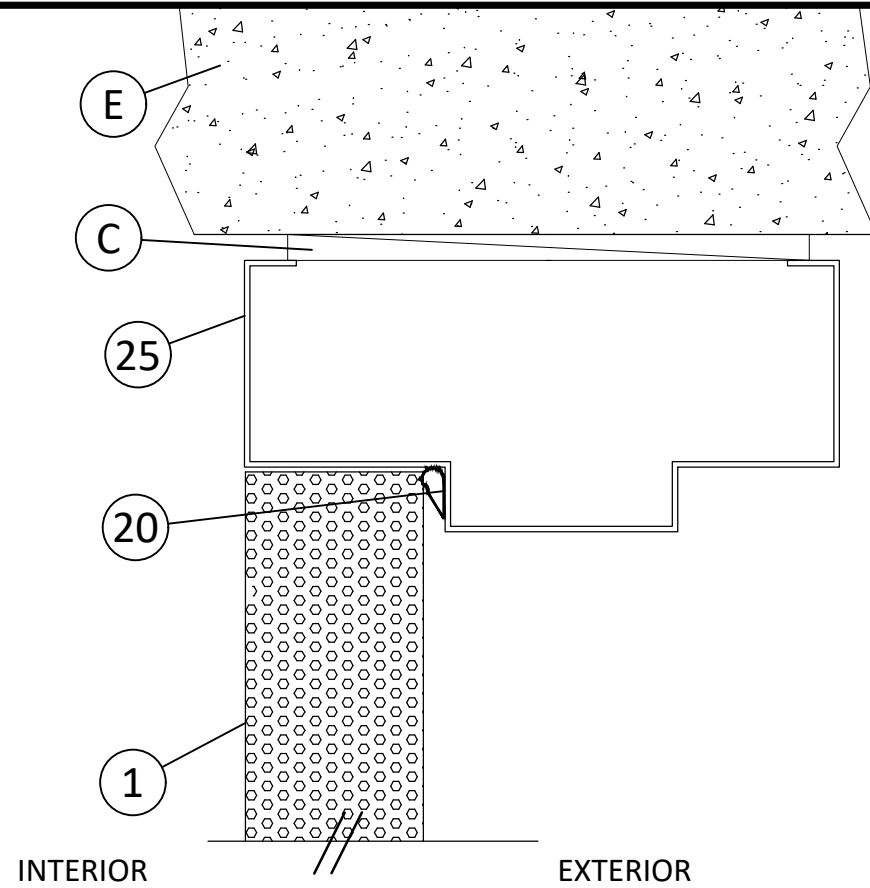
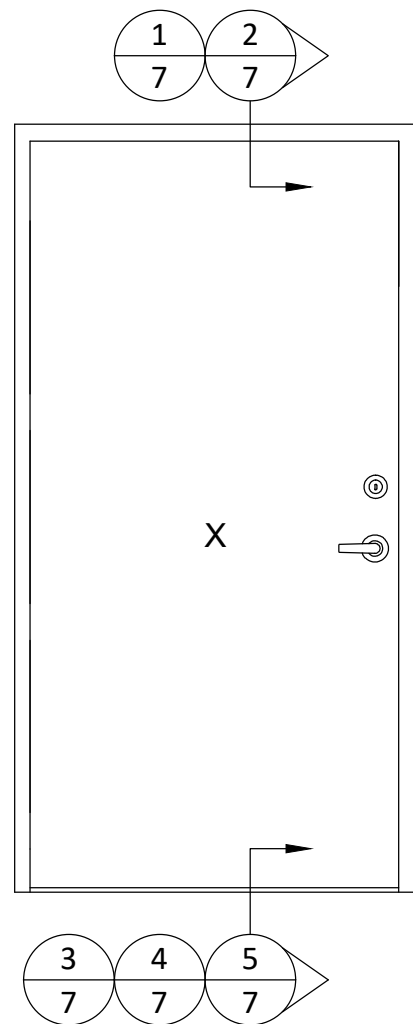
EXTERIOR

INTERIOR

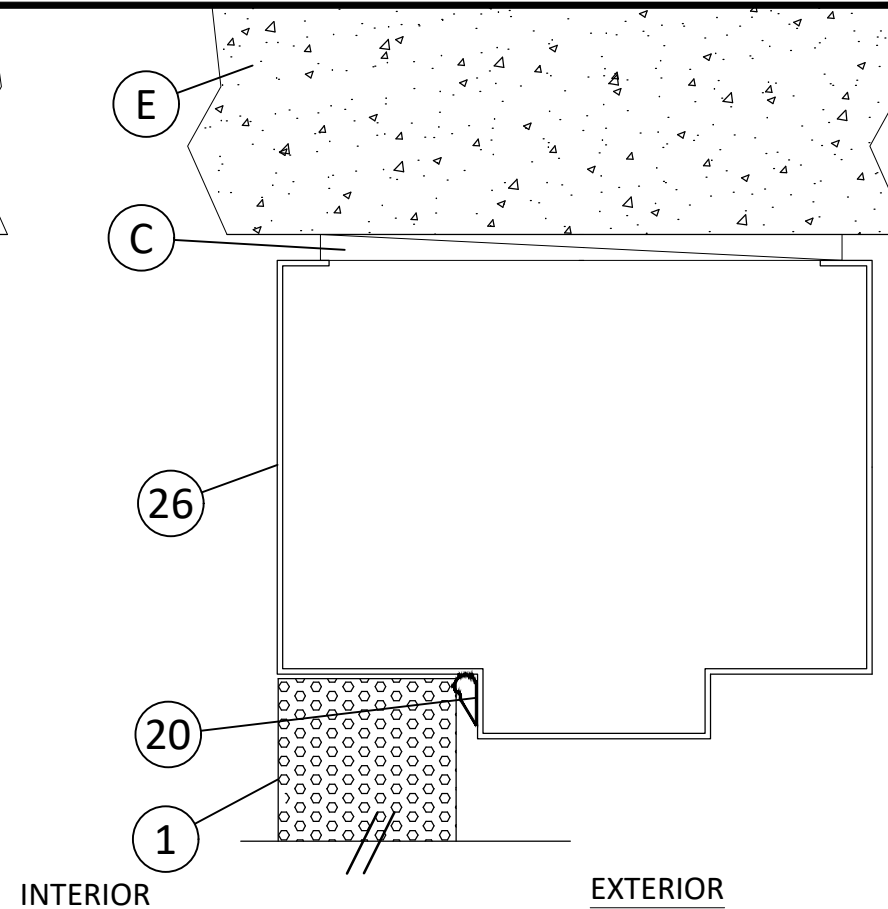


1
6 HORIZONTAL CROSS SECTION

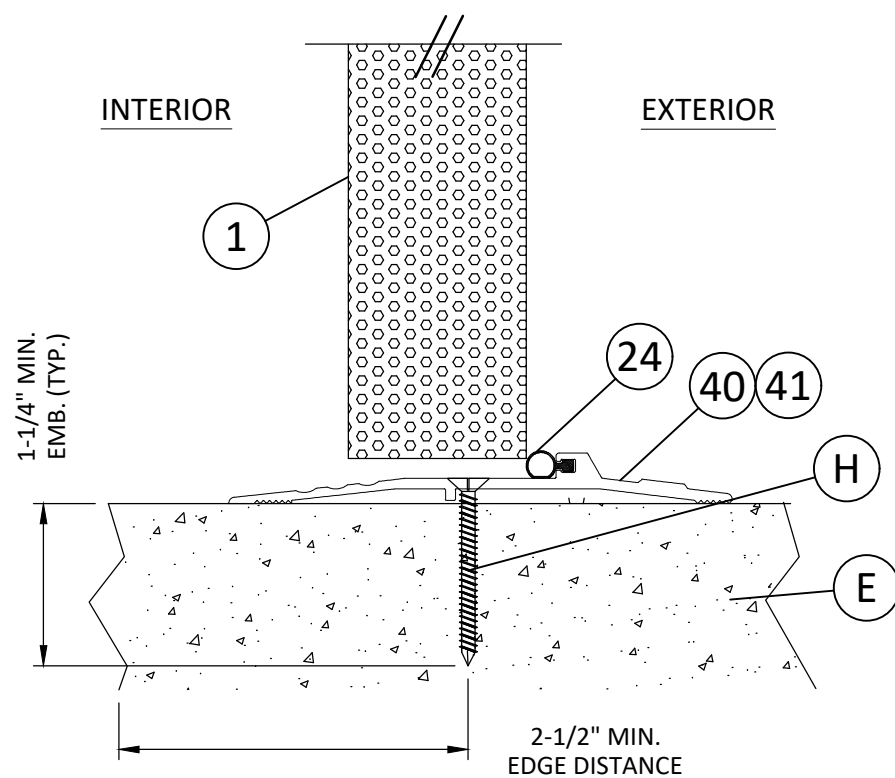
3/31/2023 8:58 AM
z:\projects\mesker mbm, llc\bc-23-0112 - fbc submittal - commercial steel doors\revisions\dwg\11218\mdi016.dwg



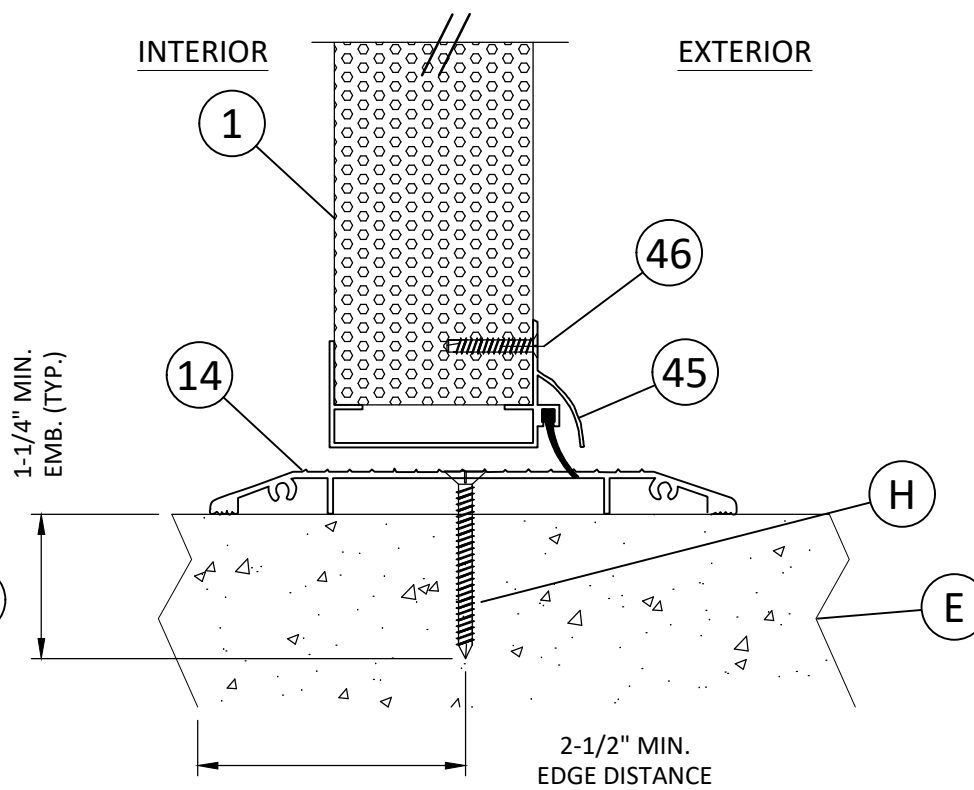
1
7 VERTICAL CROSS SECTION
W/ 2" HEAD



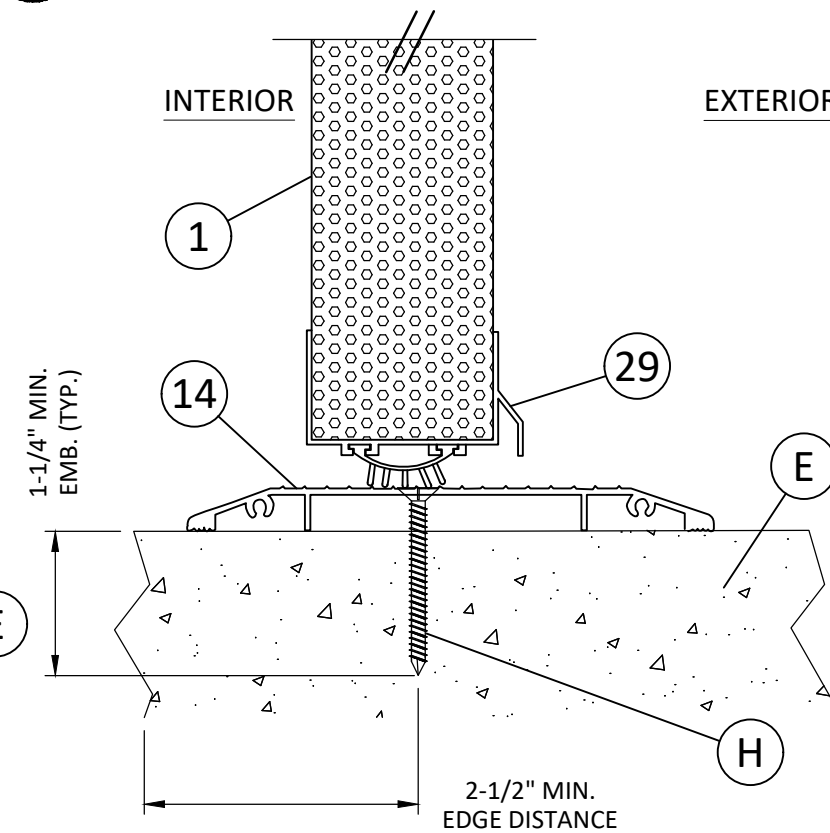
2
7 VERTICAL CROSS SECTION
W/ 4" HEAD



3
7 VERTICAL CROSS SECTION
INSWING CONFIGURATION
SEE GENERAL NOTES, SHEET 1
FOR "HVHZ" WATER INFILTRATION
REQUIREMENTS



4
7 VERTICAL CROSS SECTION
INSWING CONFIGURATION
SEE GENERAL NOTES, SHEET 1
FOR "HVHZ" WATER INFILTRATION
REQUIREMENTS



5
7 VERTICAL CROSS SECTION
INSWING CONFIGURATION
SEE GENERAL NOTES, SHEET 1
FOR "HVHZ" WATER INFILTRATION
REQUIREMENTS



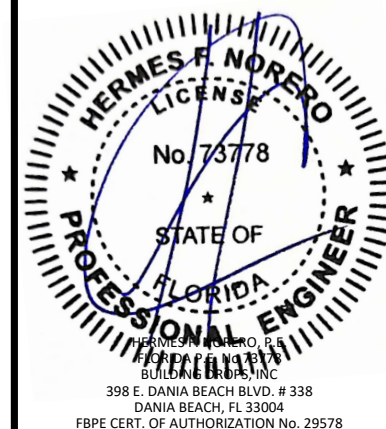
MESKER MBM, LLC
3340 STANDWOOD BLVD.
HUNTSVILLE, AL 35811
PH: (256) 851-6670

TITLE:
"N" SERIES COMMERCIAL SINGLE
OPAQUE DOOR - INSWING
(WZ3) (IMPACT)
VERTICAL CROSS SECTIONS

PREPARED BY:
BD
BUILDING DROPS
BUILDING DROPS, INC.
398 E. DANIA BEACH BLVD., STE. 338
DANIA BEACH, FL 33004
PH: (954) 399-8478
FAX: (954) 744-4738
WEB: www.buildingdrops.com

REMARKS	BY	DATE
2023 NAME CHANGE	MG	03/23

THE INSTALLATION DETAILS DESCRIBED HEREIN ARE GENERIC AND MAY NOT REFLECT ACTUAL CONDITIONS FOR A SPECIFIC SITE. IF SITE CONDITIONS CAUSE INSTALLATION TO DEVIATE FROM THE REQUIREMENTS DETAILED HEREIN, A LICENSED ENGINEER OR ARCHITECT SHALL PREPARE SITE SPECIFIC DOCUMENTS FOR USE WITH THIS DOCUMENT.



FL #:
FL11218

DATE: **09.24.15**

DWG. BY:
JK

CHK. BY:
FLS

SCALE: **NTS**

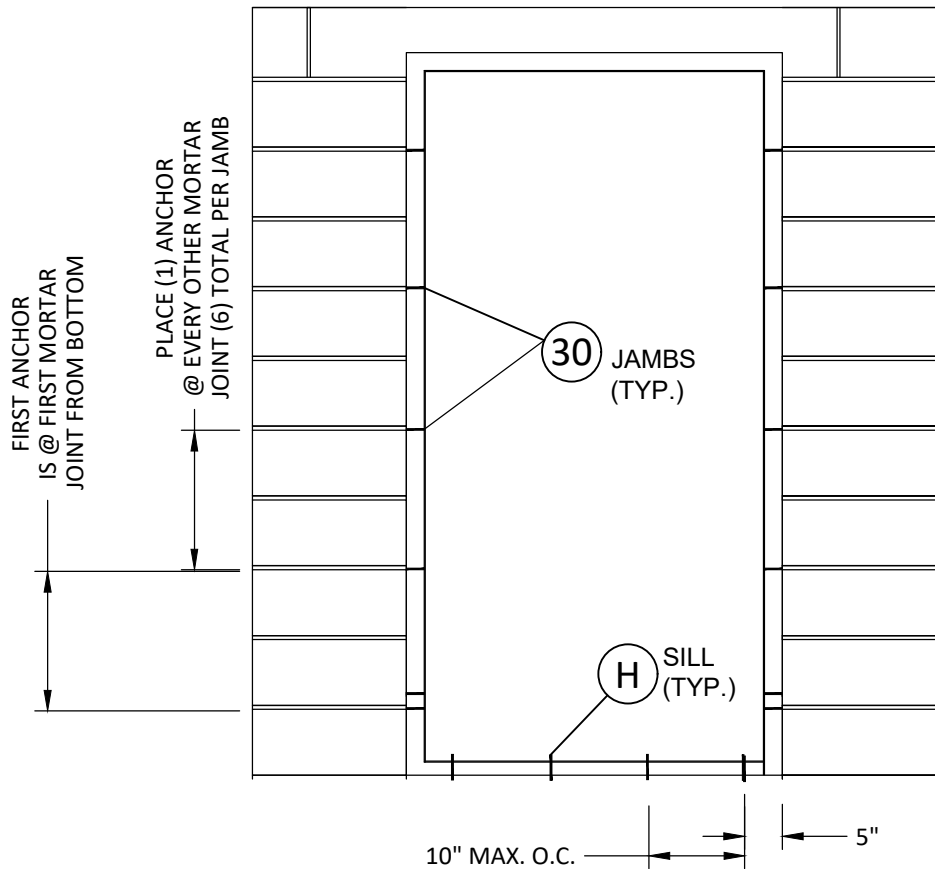
DWG. #: **MDI016**

SECTION:

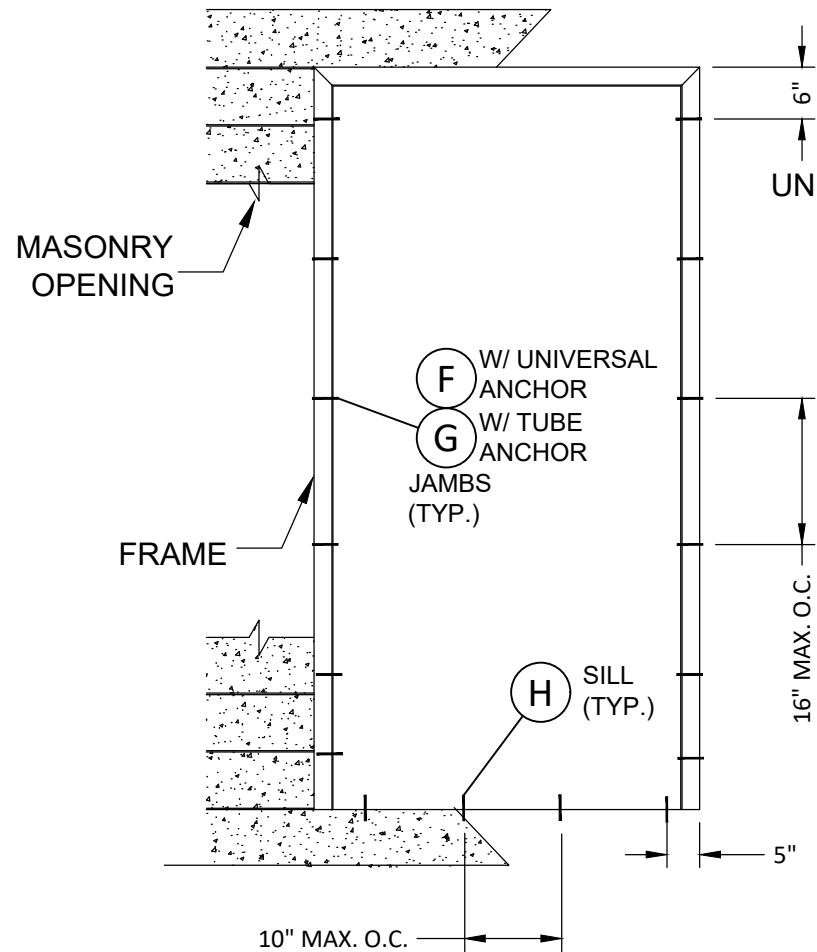
7

OF 11

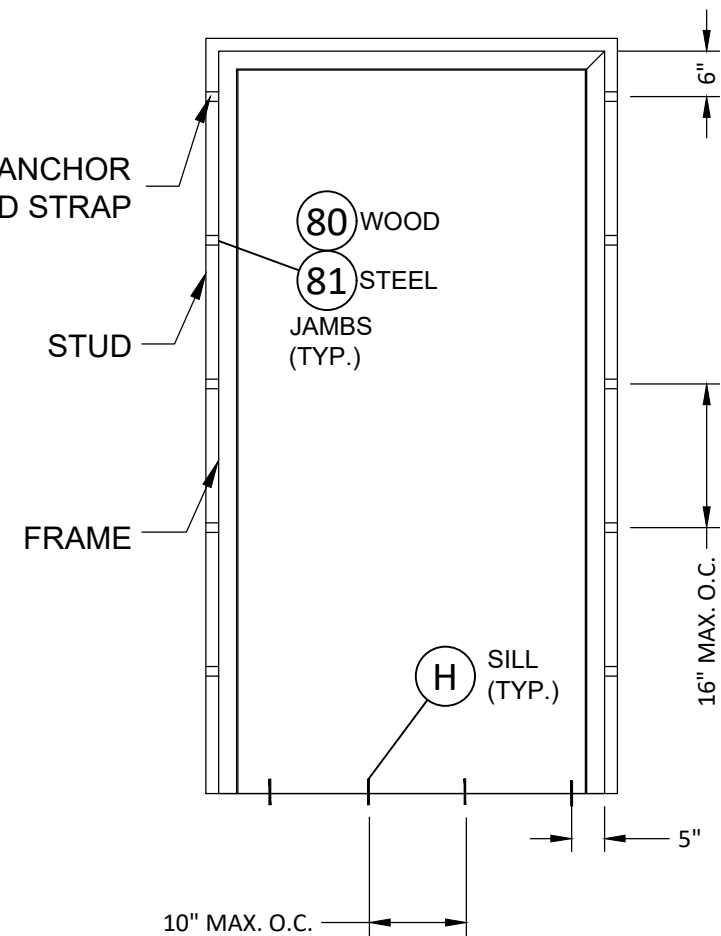
3/31/2023 8:58 AM
z:\projects\mesker.mbm, llc\fbc-23-0112 - fbc submittal - commercial steel doors revisions\dwg\fb11218\mdi016.dwg



FRAME ANCHORING
T-STRAP & WIRE ANCHOR



FRAME ANCHORING
CONCRETE/MASONRY



FRAME ANCHORING
CONCRETE/MASONRY

CONCRETE ANCHOR NOTES:

1. CONCRETE ANCHOR LOCATIONS AT THE CORNERS MAY BE ADJUSTED TO MAINTAIN THE MIN. EDGE DISTANCE TO MORTAR JOINTS.
2. CONCRETE ANCHOR LOCATIONS NOTED AS "MAX. O.C." MUST BE ADJUSTED TO MAINTAIN THE MIN. EDGE DISTANCE TO MORTAR JOINTS. ADDITIONAL CONCRETE ANCHORS MAY BE REQUIRED TO ENSURE THE "MAX. O.C." DIMENSION ARE NOT EXCEEDED.

3. CONCRETE ANCHOR TABLE:

ANCHOR TYPE	ANCHOR SIZE	MIN. EMBEDMENT	MIN. CLEARANCE TO MASONRY EDGE	MIN. CLEARANCE TO ADJACENT ANCHOR	LOCATION
ITW TAPCON	1/4"	1-1/4"	2"	4"	THRESHOLD
ELCO ULTRACON	1/4"	1-1/4"	1"	4"	
ITW TAPCONXL	5/16"	1-3/4"	4"	3-3/4"	FRAME
ELCO ULTRACON	5/16"	1-3/4"	2-1/2"	5"	

4. EMBEDMENT MAY BE THROUGH 1-1/4" FACE SHELL OF HOLLOW BLOCK.

WOOD SCREW INSTALLATION NOTES:

1. MAINTAIN A MINIMUM 5/8" EDGE DISTANCE, 1" END DISTANCE & 1" O.C. SPACING OF WOOD SCREWS TO PREVENT THE SPLITTING OF WOOD.



MESKER MBM, LLC
3340 STANDWOOD BLVD.
HUNTSVILLE, AL 35811
PH: (256) 851-6670

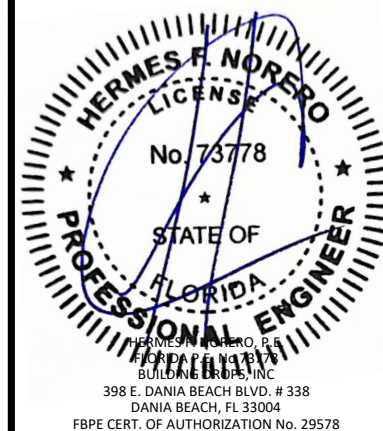
TITLE:
"N" SERIES COMMERCIAL SINGLE
OPAQUE DOOR - INSWING
(WZ3) (IMPACT)
FRAME ANCHORING

PREPARED BY:
BUILDING DROPS, INC.
398 E. DANIA BEACH BLVD., STE. 338
DANIA BEACH, FL 33004
PH: (954)399-8478
FAX: (954)744-4738
WEB: www.buildingdrops.com



REMARKS	BY	DATE
2023 NAME CHANGE	MG	03/23

THE INSTALLATION DETAILS DESCRIBED HEREIN ARE GENERIC AND MAY NOT REFLECT ACTUAL CONDITIONS FOR A SPECIFIC SITE. IF SITE CONDITIONS CAUSE INSTALLATION TO DEVIATE FROM THE REQUIREMENTS DETAILED HEREIN, A LICENSED ENGINEER OR ARCHITECT SHALL PREPARE SITE SPECIFIC DOCUMENTS FOR USE WITH THIS DOCUMENT.



FL #:
FL11218

DATE: **09.24.15**

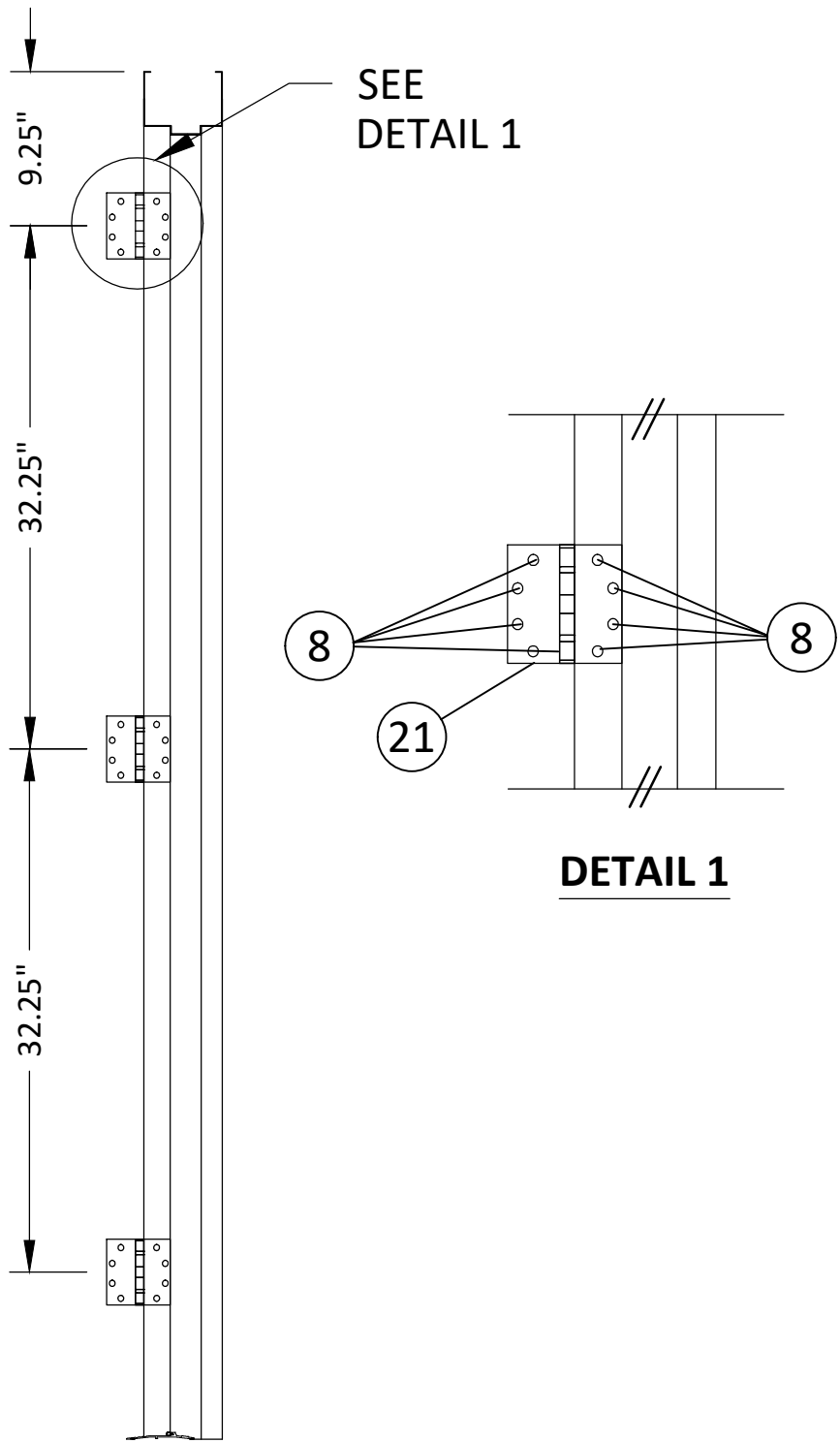
DWG. BY: **JK** CHK. BY: **FLS**

SCALE: **NTS**

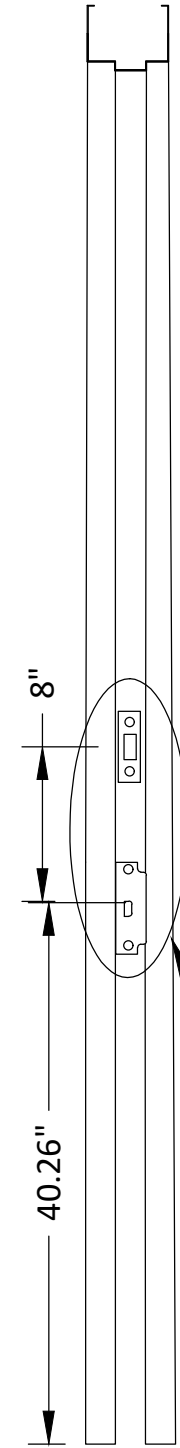
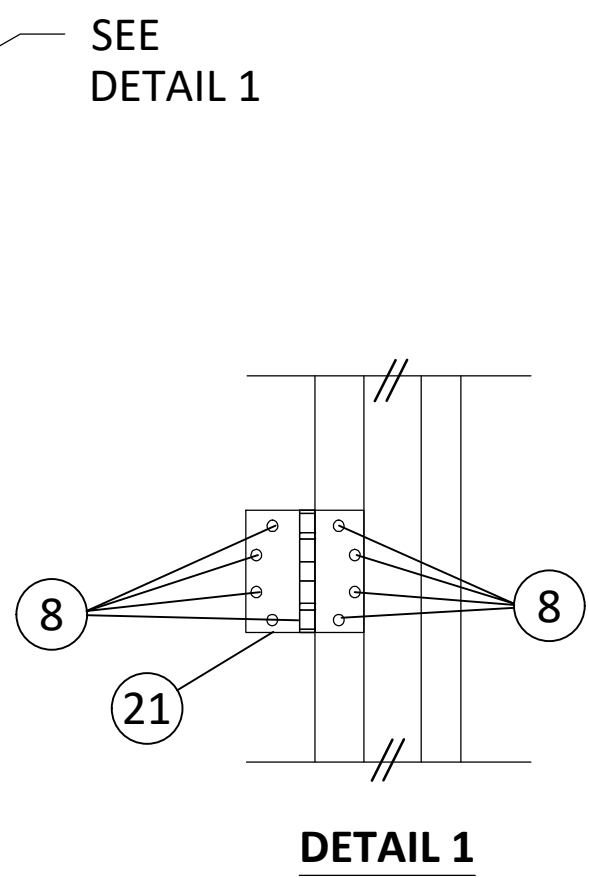
DWG. #: **MDI016**

SECTION:
8
OF 11

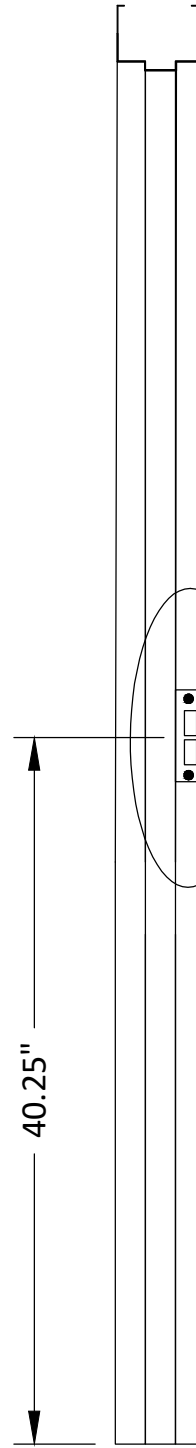
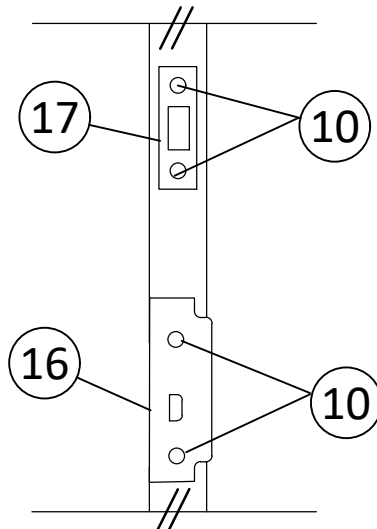
z:\projects\mesker.mbm, llc\bc-23-0112 - fbc submittal - commercial steel doors revisions\dwg\11218\mdi016.dwg 3/31/2023 8:58 AM



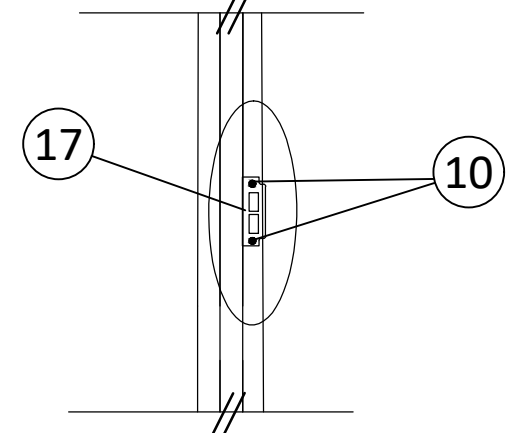
HINGE JAMB



**STRIKE JAMB
ANSI STRIKE & DEAD BOLT STRIKE**



STRIKE JAMB



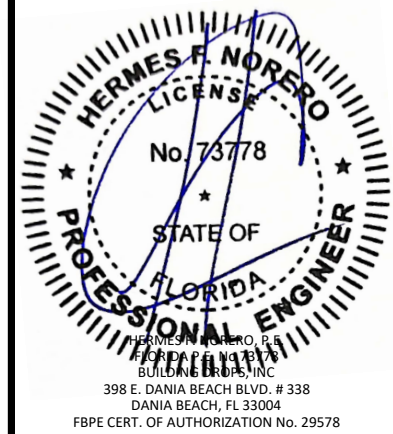
MESKER MBM, LLC
3340 STANDWOOD BLVD.
HUNTSVILLE, AL 35811
PH: (256) 851-6670

TITLE: "N" SERIES COMMERCIAL SINGLE
OPAQUE DOOR - INSWING
(WZ3) (IMPACT)
ANCHORING DETAILS

PREPARED BY:
BD
BUILDING DROPS
398 E. DANIA BEACH BLVD., STE. 338
DANIA BEACH, FL 33004
PH: (954)399-8478
FAX: (954)744-4738
WEB: www.buildingdrops.com

REMARKS	BY	DATE
2023 NAME CHANGE	MG	03/23

THE INSTALLATION DETAILS DESCRIBED HEREIN ARE GENERIC AND MAY NOT REFLECT ACTUAL CONDITIONS FOR A SPECIFIC SITE. IF SITE CONDITIONS CAUSE INSTALLATION TO DEVIATE FROM THE REQUIREMENTS DETAILED HEREIN, A LICENSED ENGINEER OR ARCHITECT SHALL PREPARE SITE SPECIFIC DOCUMENTS FOR USE WITH THIS DOCUMENT.



FL #: **FL11218**

DATE: **09.24.15**

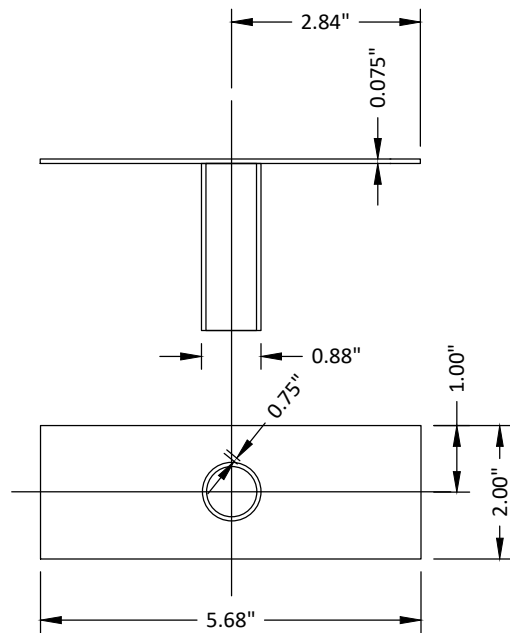
DWG. BY: **JK** CHK. BY: **FLS**

SCALE: **NTS**

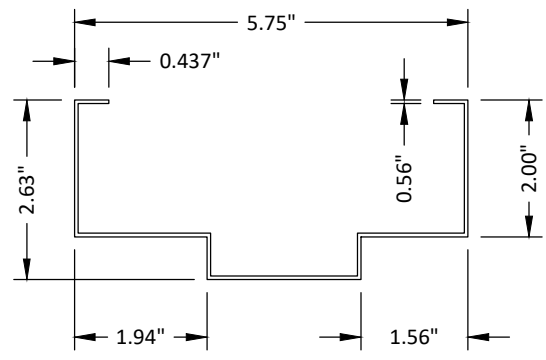
DWG. #: **MDI016**

SECTION:
9
OF 11

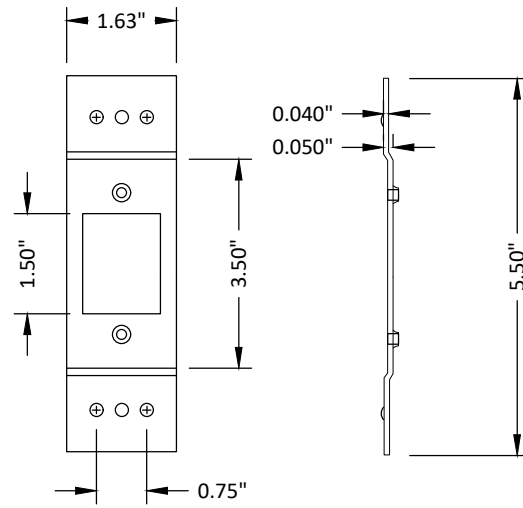
3/31/2023 8:58 AM
 z:\projects\mesker.mbm, llc\bc-23-0112 - fbc submittal - commercial steel doors revisions\dwg\11218\mdi016.dwg



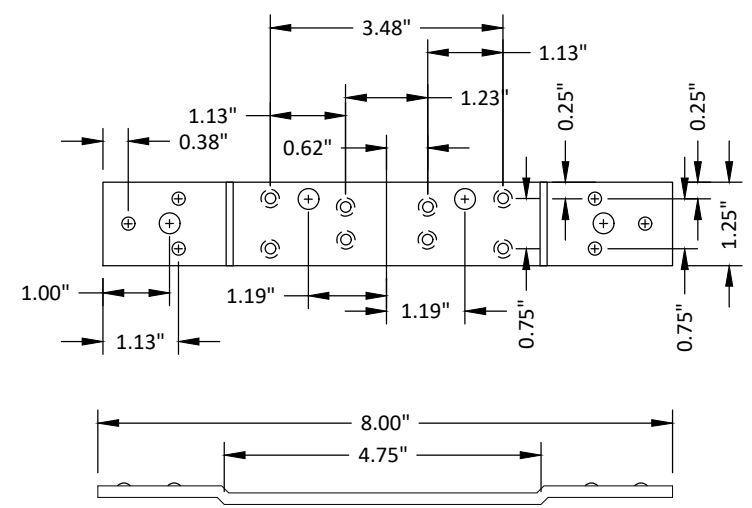
9 TUBE ANCHOR



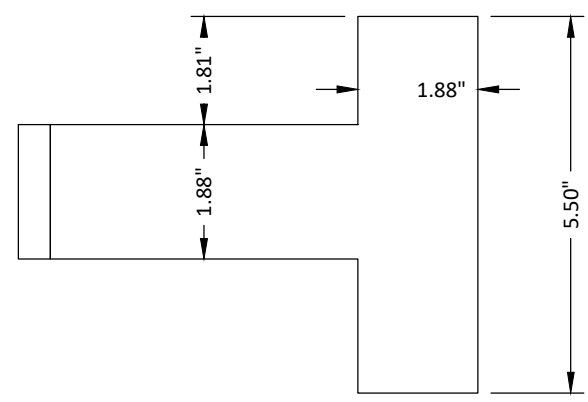
25 FRAME



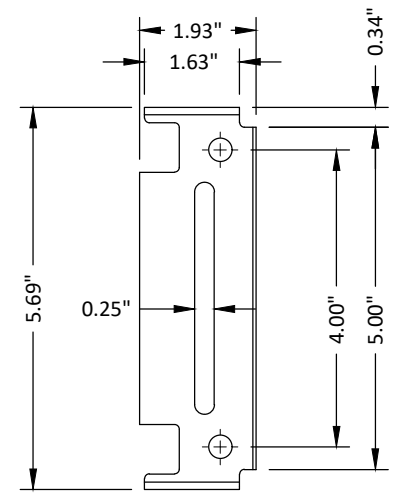
27 LATCH STRIKE REINFORCEMENT



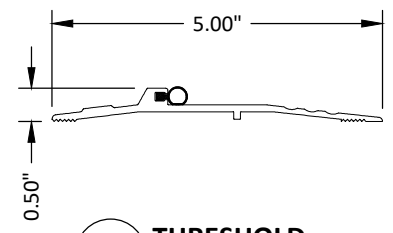
28 FRAME HINGE REINFORCEMENT



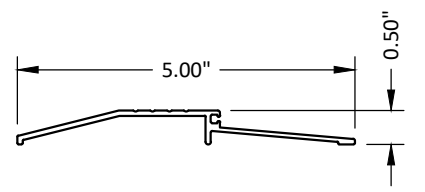
30 MASONRY "TEE" ANCHOR



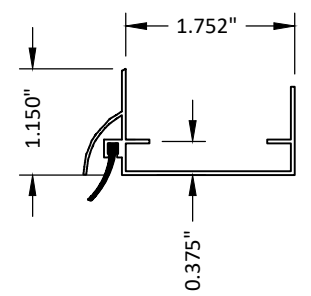
31 UNIVERSAL WALL ANCHOR



40 THRESHOLD NGP #896V



41 THRESHOLD NGP #950V



45 DOOR SWEEP



MESKER MBM, LLC
 3340 STANDWOOD BLVD.
 HUNTSVILLE, AL 35811
 PH: (256) 851-6670

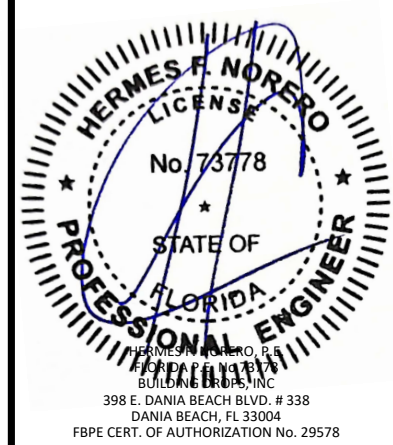
TITLE: "N" SERIES COMMERCIAL SINGLE OPAQUE DOOR - INSWING (WZ3) (IMPACT) COMPONENTS

PREPARED BY: BUILDING DROPS, INC.
 398 E. DANIA BEACH BLVD., STE. 338
 DANIA BEACH, FL 33004
 PH: (954)399-8478
 FAX: (954)744-4738
 WEB: www.buildingdrops.com



REMARKS	BY	DATE
2023 NAME CHANGE	MG	03/23

THE INSTALLATION DETAILS DESCRIBED HEREIN ARE GENERIC AND MAY NOT REFLECT ACTUAL CONDITIONS FOR A SPECIFIC SITE. IF SITE CONDITIONS CAUSE INSTALLATION TO DEVIATE FROM THE REQUIREMENTS DETAILED HEREIN, A LICENSED ENGINEER OR ARCHITECT SHALL PREPARE SITE SPECIFIC DOCUMENTS FOR USE WITH THIS DOCUMENT.



HERMES F. NORERO, P.E.
 BUILDING DROPS, INC.
 398 E. DANIA BEACH BLVD. # 338
 DANIA BEACH, FL 33004
 FBPE CERT. OF AUTHORIZATION No. 29578

FL #: **FL11218**

DATE: **09.24.15**

DWG. BY: **JK** CHK. BY: **FLS**

SCALE: **NTS**

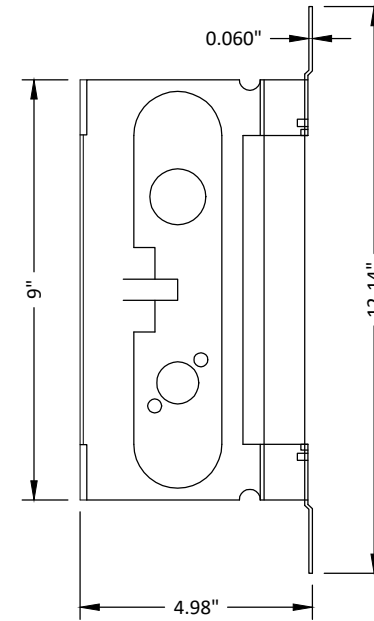
DWG. #: **MDI016**

SECTION: **10**

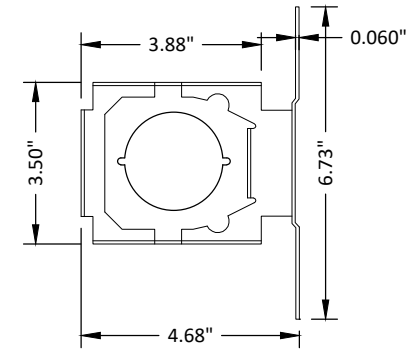
3/31/2023 8:58 AM
z:\projects\mesker.mbm, llc\bc-23-0112 - fbc submittal - commercial steel doors revisions\dwg\11218\mdi016.dwg

BILL OF MATERIALS

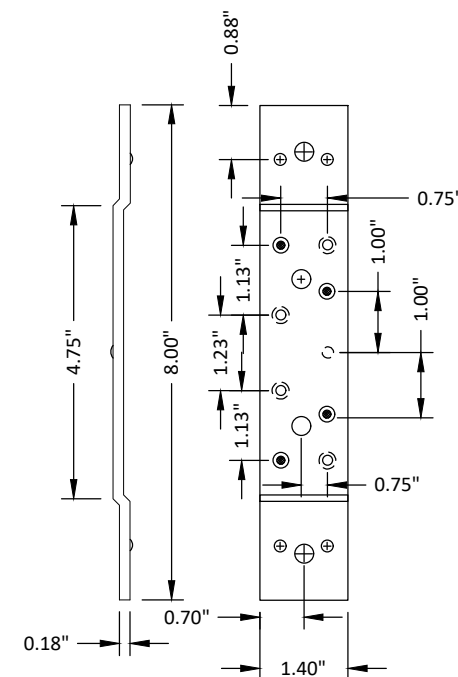
ITEM #	DESCRIPTION	MATERIAL
C	1/4" MAX. SHIM SPACE	-
E	MASONRY - 3000 PSI MIN. CONCRETE CONFORMING TO ACI 301 OR HOLLOW BLOCK CONFORMING TO ASTM C90	CONCRETE
F	5/16" X 5" PFH ITW OR ELCO CONCRETE SCREW	STEEL
G	5/16" X 4" HWH ITW OR ELCO CONCRETE SCREW	STEEL
H	1/4" X 1-3/4" ITW OR ELCO PFH CONCRETE SCREW	STEEL
1	"N" OPAQUE STEEL DOOR PANEL	-
2	DOOR SKIN - (0.042" THK. STEEL, Fy=40,3000 PSI MIN.)	STEEL
3	FOAM 1.0 PCF MIN. DENSITY	POLYSTYRENE
4	DOOR TOP & BOTTOM CLOSER	STEEL
5	LOCK BOX REINFORCEMENT	STEEL
6	CLOSER REINFORCEMENT	STEEL
7	MORTISE BOX REINFORCEMENT	STEEL
8	#12-24 X 1/2" SELF TAPPER	STEEL
9	TUBE ANCHOR (PF-10)	STEEL
10	#12-24 X 1" COMBINATION MACHINE / WOOD SCREW	STEEL
14	COLUMBIA ADA THRESHOLD #6510	ALUMINIUM
16	ANSI LATCH STRIKE	STEEL
17	DEADBOLT STRIKE	STEEL
18	ANSI MORTISE STRIKE	STEEL
20	WEATHERSTRIP (PEMKO S-88 OR PS-V)	NEOPRENE
21	4-1/2" X 4-1/2" X 0.125" TEMPLATE HINGE	STEEL
22	STANDARD (LONG) DOOR HINGE TOP HINGE REINFORCEMENT	STEEL
23	STANDARD (SHORT) DOOR HINGE MIDDLE BOTTOM HINGE REINF.	STEEL
24	WEATHERSTRIP (THRESHOLD)	NEOPRENE
25	FRAME (2") - 5-3/4" MIN. (0.056" THK) BY MESKER	STEEL
27	LATCH STRIKE REINFORCEMENT	STEEL
28	FRAME HINGE REINFORCEMENT	STEEL
29	COLUMBIA DOOR BOTTOM SWEEP #2580	ALUMINUM
30	MASONRY 'TEE' ANCHOR (MESKER PFMT5)	STEEL
31	UNIVERSAL WALL ANCHOR (PS-241)	STEEL
40	THRESHOLD NATIONAL GUARD PRODUCTS, INC. #896	ALUMINIUM
41	THRESHOLD NATIONAL GUARD PRODUCTS, INC. #950	ALUMINIUM
45	95WHA DOOR SWEEP NATIONAL GUARD PRODUCTS, INC.	ALUMINIUM
46	#8 X 3/4" PHILIPS HEAD SMS	STEEL
46	SCHLAGE LOCK SET ASSEMBLY ND53PD	STEEL
71	DESIGN HARDWARE D1-S SERIES DEADBOLT	STEEL
72	DESIGN HARDWARE "Z" SERIES ENTRY	STEEL
73	86E MORTISE LOCK- ONITY CT SERIES	STEEL
74	86E MORTISE LOCK- ONITY HT SERIES	STEEL
75	86E MORTISE LOCK- ONITY ADVANCE SERIES	STEEL
76	DESIGN HARDWARE D2-S SERIES DEADBOLT	STEEL
77	DESIGN HARDWARE "X" SERIES ENTRY	STEEL
80	#8 X 1-3/4" PH SMS (1-1/2" MIN. EMBEDMENT)	STEEL
81	#10 X 3/4" PH SELF-DRILLING SMS	STEEL



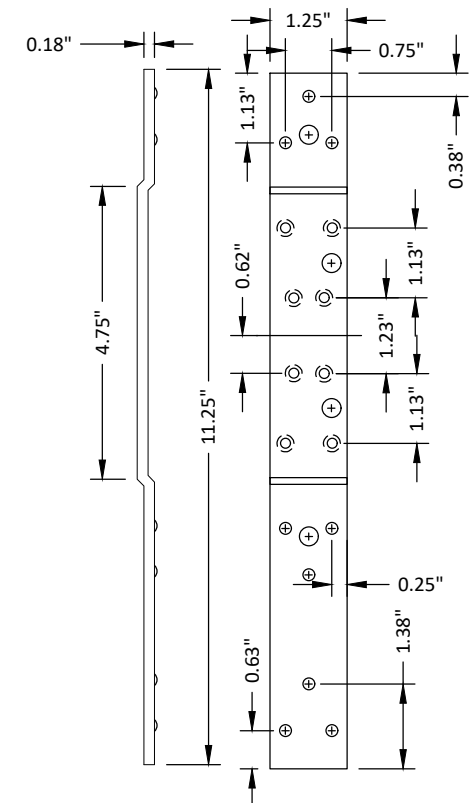
7 MORTISE BOX REINFORCEMENT



5 LOCK BOX REINFORCEMENT



23 STANDARD (SHORT) DOOR HINGE
Reinforcement middle and bottom hinge



22 STANDARD (LONG) DOOR HINGE
Reinforcement top hinge



MESKER MBM, LLC
3340 STANDWOOD BLVD.
HUNTSVILLE, AL 35811
PH: (256) 851-6670

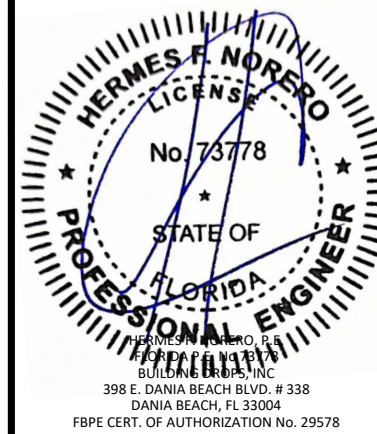
TITLE: "N" SERIES COMMERCIAL SINGLE OPAQUE DOOR - INSWING (WZ3) (IMPACT)
BILL OF MATERIALS & COMPONENTS

PREPARED BY: **BUILDING DROPS, INC.**
398 E. DANIA BEACH BLVD., STE. 338
DANIA BEACH, FL 33004
PH: (954) 399-8478
FAX: (954) 744-4738
WEB: www.buildingdrops.com



REMARKS	BY	DATE
2023 NAME CHANGE	MG	03/23

THE INSTALLATION DETAILS DESCRIBED HEREIN ARE GENERIC AND MAY NOT REFLECT ACTUAL CONDITIONS FOR A SPECIFIC SITE. IF SITE CONDITIONS CAUSE INSTALLATION TO DEVIATE FROM THE REQUIREMENTS DETAILED HEREIN, A LICENSED ENGINEER OR ARCHITECT SHALL PREPARE SITE SPECIFIC DOCUMENTS FOR USE WITH THIS DOCUMENT.



FL #:	FL11218
DATE:	09.24.15
DWG. BY:	JK
CHK. BY:	FLS
SCALE:	NTS
DWG. #:	MDI016
SECTION:	11
	OF 11